

Datasheet for ABIN657641  
**anti-PRSS2 antibody (AA 80-108)**[Go to Product page](#)

## 2 Images

## Overview

Quantity:	400 µL
Target:	PRSS2
Binding Specificity:	AA 80-108
Reactivity:	Human
Host:	Rabbit
Clonality:	Polyclonal
Conjugate:	This PRSS2 antibody is un-conjugated
Application:	Western Blotting (WB), Immunohistochemistry (Paraffin-embedded Sections) (IHC (p))

## Product Details

Immunogen:	This PRSS2 antibody is generated from rabbits immunized with a KLH conjugated synthetic peptide between 80-108 amino acids from the Central region of human PRSS2.
Clone:	RB33684
Isotype:	Ig Fraction
Purification:	This antibody is purified through a protein A column, followed by peptide affinity purification.

## Target Details

Target:	PRSS2
Alternative Name:	PRSS2 ( <a href="#">PRSS2 Products</a> )
Background:	This gene encodes a trypsinogen, which is a member of the trypsin family of serine proteases.

## Target Details

This enzyme is secreted by the pancreas and cleaved to its active form in the small intestine. It is active on peptide linkages involving the carboxyl group of lysine or arginine. This gene and several other trypsinogen genes are localized to the T cell receptor beta locus on chromosome 7.

Molecular Weight: 26488

Gene ID: 5645

NCBI Accession: [NP\\_002761](#)

UniProt: [P07478](#)

## Application Details

Application Notes: WB: 1:1000. IHC-P: 1:10~50

Restrictions: For Research Use only

## Handling

Format: Liquid

Buffer: Purified polyclonal antibody supplied in PBS with 0.09 % (W/V) sodium azide.

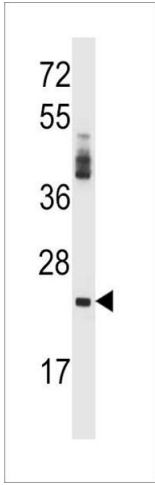
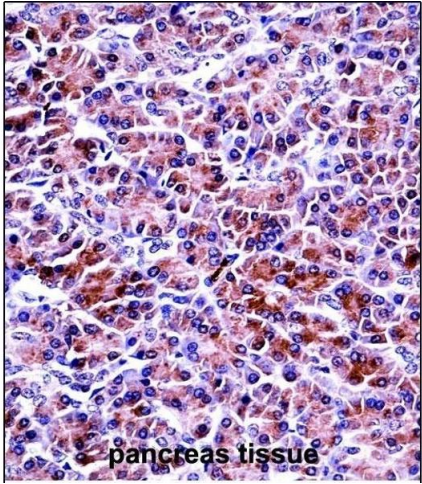
Preservative: Sodium azide

Precaution of Use: This product contains Sodium azide: a POISONOUS AND HAZARDOUS SUBSTANCE which should be handled by trained staff only.

Storage: 4 °C, -20 °C

Storage Comment: PRSS2 Antibody (Center) can be refrigerated at 2-8 °C for up to 6 months. For long term storage, place the at -20 °C.

Expiry Date: 6 months



Immunohistochemistry (Paraffin-embedded Sections)

**Image 1.** PRSS2 Antibody (Center) ((ABIN657641 and ABIN2846637))immunohistochemistry analysis in formalin fixed and paraffin embedded human pancreas tissue followed by peroxidase conjugation of the secondary antibody and DAB staining.This data demonstrates the use of PRSS2 Antibody (Center) for immunohistochemistry. Clinical relevance has not been evaluated.

Western Blotting

**Image 2.** PRSS2 Antibody (Center) (ABIN657641 and ABIN2846637) western blot analysis in NCI- cell line lysates (35 µg/lane).This demonstrates the PRSS2 antibody detected the PRSS2 protein (arrow).