

Datasheet for ABIN657643  
**anti-TLR9 antibody (C-Term)**[Go to Product page](#)

## 2 Images

## Overview

Quantity:	400 µL
Target:	TLR9
Binding Specificity:	AA 842-870, C-Term
Reactivity:	Human
Host:	Rabbit
Clonality:	Polyclonal
Conjugate:	This TLR9 antibody is un-conjugated
Application:	Western Blotting (WB), Flow Cytometry (FACS)

## Product Details

Immunogen:	This TLR9 antibody is generated from rabbits immunized with a KLH conjugated synthetic peptide between 842-870 amino acids from the C-terminal region of human TLR9.
Clone:	RB33688
Isotype:	Ig Fraction
Purification:	This antibody is purified through a protein A column, followed by peptide affinity purification.

## Target Details

Target:	TLR9
Alternative Name:	TLR9 ( <a href="#">TLR9 Products</a> )
Background:	The protein encoded by this gene is a member of the Toll-like receptor (TLR) family which plays

## Target Details

a fundamental role in pathogen recognition and activation of innate immunity. TLRs are highly conserved from Drosophila to humans and share structural and functional similarities. They recognize pathogen-associated molecular patterns (PAMPs) that are expressed on infectious agents, and mediate the production of cytokines necessary for the development of effective immunity. The various TLRs exhibit different patterns of expression. This gene is preferentially expressed in immune cell rich tissues, such as spleen, lymph node, bone marrow and peripheral blood leukocytes. Studies in mice and human indicate that this receptor mediates cellular response to unmethylated CpG dinucleotides in bacterial DNA to mount an innate immune response.

Molecular Weight: 115860

Gene ID: 54106

NCBI Accession: [NP\\_059138](#)

UniProt: [Q9NR96](#)

Pathways: [TLR Signaling](#), [Activation of Innate immune Response](#), [Cellular Response to Molecule of Bacterial Origin](#), [Toll-Like Receptors Cascades](#)

## Application Details

Application Notes: WB: 1:1000. FC: 1:10~50

Restrictions: For Research Use only

## Handling

Format: Liquid

Buffer: Purified polyclonal antibody supplied in PBS with 0.09 % (W/V) sodium azide.

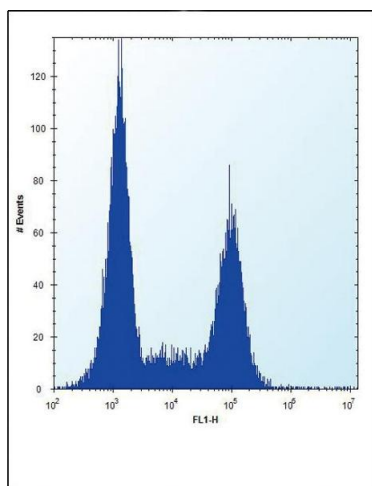
Preservative: Sodium azide

Precaution of Use: This product contains Sodium azide: a POISONOUS AND HAZARDOUS SUBSTANCE which should be handled by trained staff only.

Storage: 4 °C,-20 °C

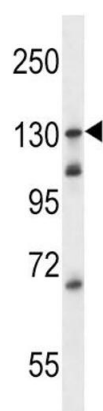
Storage Comment: TLR9 Antibody (C-term) can be refrigerated at 2-8 °C for up to 6 months. For long term storage, place the at -20 °C.

Expiry Date: 6 months



### Flow Cytometry

**Image 1.** TLR9 Antibody (C-term) (ABIN657643 and ABIN2846638) flow cytometric analysis of Ramos cells (right histogram) compared to a negative control cell (left histogram). FITC-conjugated donkey-anti-rabbit secondary antibodies were used for the analysis.



### Western Blotting

**Image 2.** TLR9 Antibody (C-term) (ABIN657643 and ABIN2846638) western blot analysis in Ramos cell line lysates (35 µg/lane). This demonstrates the TLR9 antibody detected the TLR9 protein (arrow).