

Datasheet for ABIN657648
anti-NCK1 antibody (N-Term)

3 Images

[Go to Product page](#)

Overview

Quantity:	400 µL
Target:	NCK1
Binding Specificity:	AA 63-92, N-Term
Reactivity:	Human
Host:	Rabbit
Clonality:	Polyclonal
Application:	Western Blotting (WB), Immunohistochemistry (Paraffin-embedded Sections) (IHC (p))

Product Details

Immunogen:	This NCK1 antibody is generated from rabbits immunized with a KLH conjugated synthetic peptide between 63-92 amino acids from the N-terminal region of human NCK1.
Clone:	RB33697
Isotype:	Ig Fraction
Purification:	This antibody is purified through a protein A column, followed by peptide affinity purification.

Target Details

Target:	NCK1
Alternative Name:	NCK1 (NCK1 Products)
Background:	The protein encoded by this gene is one of the signaling and transforming proteins containing Src homology 2 and 3 (SH2 and SH3) domains. It is located in the cytoplasm and is an adaptor protein involved in transducing signals from receptor tyrosine kinases to downstream signal

Target Details

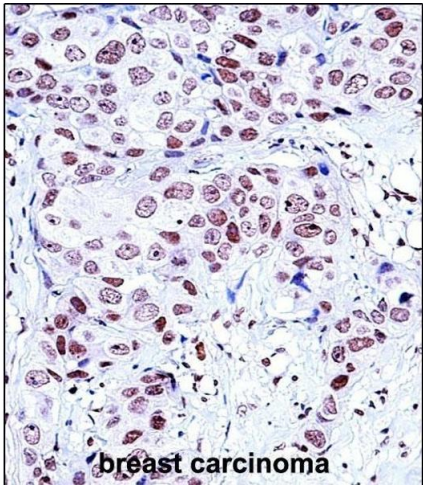
	recipients such as RAS. Alternatively spliced transcript variants encoding different isoforms have been found.
Molecular Weight:	42864
Gene ID:	4690
NCBI Accession:	NP_001177725 , NP_006144
UniProt:	P16333
Pathways:	TCR Signaling , Regulation of Actin Filament Polymerization , Signaling Events mediated by VEGFR1 and VEGFR2 , VEGFR1 Specific Signals

Application Details

Application Notes:	WB: 1:1000. WB: 1:1000. IHC-P: 1:10~50
Restrictions:	For Research Use only

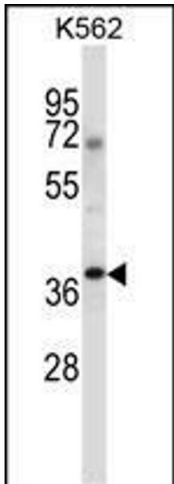
Handling

Format:	Liquid
Buffer:	Purified polyclonal antibody supplied in PBS with 0.09 % (W/V) sodium azide.
Preservative:	Sodium azide
Precaution of Use:	This product contains Sodium azide: a POISONOUS AND HAZARDOUS SUBSTANCE which should be handled by trained staff only.
Storage:	4 °C,-20 °C
Storage Comment:	NCK1 Antibody (N-term) can be refrigerated at 2-8 °C for up to 6 months. For long term storage, place the at -20 °C.
Expiry Date:	6 months



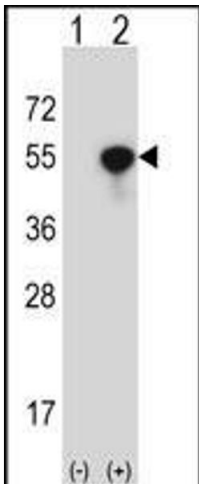
Immunohistochemistry (Paraffin-embedded Sections)

Image 1. NCK1 Antibody (N-term) (ABIN657648 and ABIN2846643) immunohistochemistry analysis in formalin fixed and paraffin embedded human breast carcinoma followed by peroxidase conjugation of the secondary antibody and DAB staining. This data demonstrates the use of NCK1 Antibody (N-term) for immunohistochemistry. Clinical relevance has not been evaluated.



Western Blotting

Image 2. NCK1 Antibody (N-term) (ABIN657648 and ABIN2846643) western blot analysis in K562 cell line lysates (35 µg/lane). This demonstrates the NCK1 antibody detected the NCK1 protein (arrow).



Western Blotting

Image 3. Western blot analysis of NCK1 (arrow) using rabbit polyclonal NCK1 Antibody (N-term) (ABIN657648 and ABIN2846643). 293 cell lysates (2 µg/lane) either nontransfected (Lane 1) or transiently transfected (Lane 2) with the NCK1 gene.