

Datasheet for ABIN657649  
**anti-Cortactin antibody (AA 273-302)**

## 3 Images

[Go to Product page](#)

## Overview

Quantity:	400 µL
Target:	Cortactin (CTTN)
Binding Specificity:	AA 273-302
Reactivity:	Human
Host:	Rabbit
Clonality:	Polyclonal
Application:	Western Blotting (WB), Immunohistochemistry (Paraffin-embedded Sections) (IHC (p))

## Product Details

Immunogen:	This CTTN antibody is generated from rabbits immunized with a KLH conjugated synthetic peptide between 273-302 amino acids from the Central region of human CTTN.
Clone:	RB33698
Isotype:	Ig Fraction
Predicted Reactivity:	C
Purification:	This antibody is purified through a protein A column, followed by peptide affinity purification.

## Target Details

Target:	Cortactin (CTTN)
Alternative Name:	CTTN ( <a href="#">CTTN Products</a> )
Background:	This gene is overexpressed in breast cancer and squamous cell carcinomas of the head and

## Target Details

neck. The encoded protein is localized in the cytoplasm and in areas of the cell-substratum contacts. This gene has two roles: (1) regulating the interactions between components of adherens-type junctions and (2) organizing the cytoskeleton and cell adhesion structures of epithelia and carcinoma cells. During apoptosis, the encoded protein is degraded in a caspase-dependent manner. The aberrant regulation of this gene contributes to tumor cell invasion and metastasis. Three splice variants that encode different isoforms have been identified for this gene.

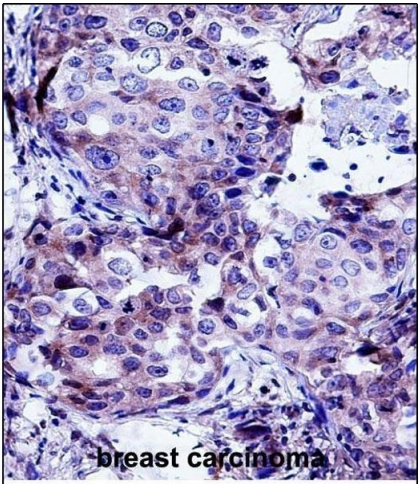
Molecular Weight:	61586
Gene ID:	2017
NCBI Accession:	<a href="#">NP_001171669</a> , <a href="#">NP_005222</a> , <a href="#">NP_612632</a>
UniProt:	<a href="#">Q14247</a>
Pathways:	<a href="#">MAPK Signaling</a>

## Application Details

Application Notes:	WB: 1:1000. WB: 1:1000. IHC-P: 1:10~50
Restrictions:	For Research Use only

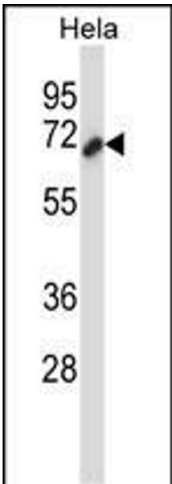
## Handling

Format:	Liquid
Buffer:	Purified polyclonal antibody supplied in PBS with 0.09 % (W/V) sodium azide.
Preservative:	Sodium azide
Precaution of Use:	This product contains Sodium azide: a POISONOUS AND HAZARDOUS SUBSTANCE which should be handled by trained staff only.
Storage:	4 °C,-20 °C
Storage Comment:	CTTN Antibody (Center) can be refrigerated at 2-8 °C for up to 6 months. For long term storage, place the at -20 °C.
Expiry Date:	6 months



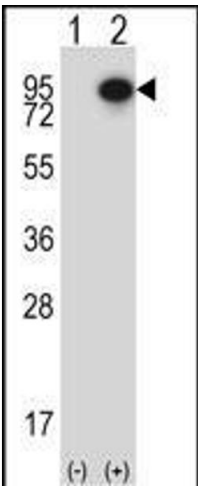
Immunohistochemistry (Paraffin-embedded Sections)

**Image 1.** CTTN Antibody (Center) (ABIN657649 and ABIN2846644) immunohistochemistry analysis in formalin fixed and paraffin embedded human breast carcinoma followed by peroxidase conjugation of the secondary antibody and DAB staining. This data demonstrates the use of CTTN Antibody (Center) for immunohistochemistry. Clinical relevance has not been evaluated.



Western Blotting

**Image 2.** CTTN Antibody (Center) (ABIN657649 and ABIN2846644) western blot analysis in HeLa cell line lysates (35 µg/lane). This demonstrates the CTTN antibody detected the CTTN protein (arrow).



Western Blotting

**Image 3.** Western blot analysis of CTTN (arrow) using rabbit polyclonal CTTN Antibody (Center) (ABIN657649 and ABIN2846644). 293 cell lysates (2 µg/lane) either nontransfected (Lane 1) or transiently transfected (Lane 2) with the CTTN gene.