



Datasheet for ABIN657654
anti-Keratin 6B antibody (AA 207-236)



[Go to Product page](#)

2 Images

Overview

Quantity:	400 µL
Target:	Keratin 6B (KRT6B)
Binding Specificity:	AA 207-236
Reactivity:	Human
Host:	Rabbit
Clonality:	Polyclonal
Application:	Western Blotting (WB), Immunohistochemistry (Paraffin-embedded Sections) (IHC (p))

Product Details

Immunogen:	This KRT6B antibody is generated from rabbits immunized with a KLH conjugated synthetic peptide between 207-236 amino acids from the Central region of human KRT6B.
Clone:	RB33708
Isotype:	Ig Fraction
Purification:	This antibody is purified through a protein A column, followed by peptide affinity purification.

Target Details

Target:	Keratin 6B (KRT6B)
Alternative Name:	KRT6B (KRT6B Products)
Background:	The protein encoded by this gene is a member of the keratin gene family. The type II cytokeratins consist of basic or neutral proteins which are arranged in pairs of heterotypic keratin chains coexpressed during differentiation of simple and stratified epithelial tissues. As

Target Details

many as six of this type II cytokeratin (KRT6) have been identified, the multiplicity of the genes is attributed to successive gene duplication events. The genes are expressed with family members KRT16 and/or KRT17 in the filiform papillae of the tongue, the stratified epithelial lining of oral mucosa and esophagus, the outer root sheath of hair follicles, and the glandular epithelia. Mutations in these genes have been associated with pachyonychia congenita. The type II cytokeratins are clustered in a region of chromosome 12q12-q13. [provided by RefSeq].

Molecular Weight: 60067

Gene ID: 3854

NCBI Accession: [NP_005546](#)

UniProt: [P04259](#)

Application Details

Application Notes: WB: 1:1000. IHC-P: 1:10~50

Restrictions: For Research Use only

Handling

Format: Liquid

Buffer: Purified polyclonal antibody supplied in PBS with 0.09 % (W/V) sodium azide.

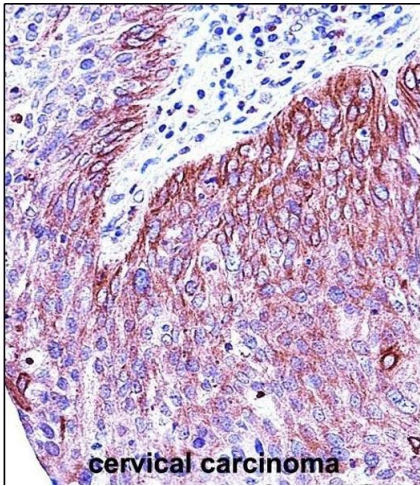
Preservative: Sodium azide

Precaution of Use: This product contains Sodium azide: a POISONOUS AND HAZARDOUS SUBSTANCE which should be handled by trained staff only.

Storage: 4 °C, -20 °C

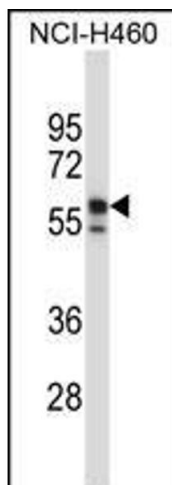
Storage Comment: KRT6B Antibody (Center) can be refrigerated at 2-8 °C for up to 6 months. For long term storage, place the at -20 °C.

Expiry Date: 6 months



Immunohistochemistry (Paraffin-embedded Sections)

Image 1. KRT6B Antibody (Center) (ABIN657654 and ABIN2846649) immunohistochemistry analysis in formalin fixed and paraffin embedded human cervical carcinoma followed by peroxidase conjugation of the secondary antibody and DAB staining. This data demonstrates the use of KRT6B Antibody (Center) for immunohistochemistry. Clinical relevance has not been evaluated.



Western Blotting

Image 2. KRT6B Antibody (Center) (ABIN657654 and ABIN2846649) western blot analysis in NCI- cell line lysates (35 µg/lane). This demonstrates the KRT6B antibody detected the KRT6B protein (arrow).