

Datasheet for ABIN657656
anti-MMP28 antibody (AA 195-223)[Go to Product page](#)

2 Images

Overview

Quantity:	400 µL
Target:	MMP28
Binding Specificity:	AA 195-223
Reactivity:	Human
Host:	Rabbit
Clonality:	Polyclonal
Application:	Western Blotting (WB), Immunohistochemistry (Paraffin-embedded Sections) (IHC (p))

Product Details

Immunogen:	This MMP28 antibody is generated from rabbits immunized with a KLH conjugated synthetic peptide between 195-223 amino acids from the Central region of human MMP28.
Clone:	RB33715
Isotype:	Ig Fraction
Purification:	This antibody is purified through a protein A column, followed by peptide affinity purification.

Target Details

Target:	MMP28
Alternative Name:	MMP28 (MMP28 Products)
Background:	Proteins of the matrix metalloproteinase (MMP) family are involved in the breakdown of extracellular matrix for both normal physiological processes, such as embryonic development, reproduction and tissue remodeling, and disease processes, such as asthma and metastasis.

Target Details

This gene encodes a secreted enzyme that degrades casein. Its expression pattern suggests that it plays a role in tissue homeostasis and in wound repair. Transcript variants encoding different isoforms have been described. [provided by RefSeq].

Molecular Weight: 58939

Gene ID: 79148

NCBI Accession: [NP_001027449](#), [NP_077278](#)

UniProt: [Q9H239](#)

Application Details

Application Notes: WB: 1:1000. IHC-P: 1:10~50

Restrictions: For Research Use only

Handling

Format: Liquid

Buffer: Purified polyclonal antibody supplied in PBS with 0.09 % (W/V) sodium azide.

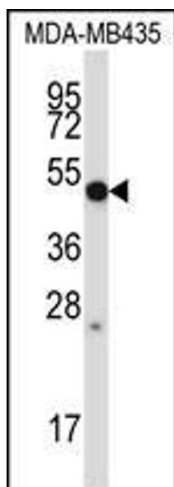
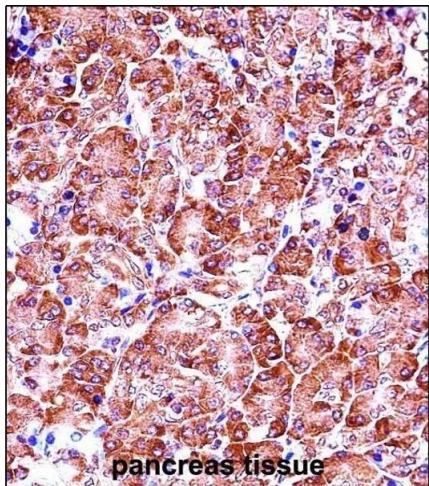
Preservative: Sodium azide

Precaution of Use: This product contains Sodium azide: a POISONOUS AND HAZARDOUS SUBSTANCE which should be handled by trained staff only.

Storage: 4 °C, -20 °C

Storage Comment: MMP28 Antibody (Center) can be refrigerated at 2-8 °C for up to 6 months. For long term storage, place the at -20 °C.

Expiry Date: 6 months



Immunohistochemistry (Paraffin-embedded Sections)

Image 1. P28 Antibody (Center) (ABIN657656 and ABIN2846650) iunohistochemistry analysis in formalin fixed and paraffin embedded human pancreas tissue followed by peroxidase conjugation of the secondary antibody and DAB staining.This data demonstrates the use of P28 Antibody (Center) for iunohistochemistry. Clinical relevance has not been evaluated.

Western Blotting

Image 2. P28 Antibody (Center) (ABIN657656 and ABIN2846650) western blot analysis in MDA-M cell line lysates (35 µg/lane).This demonstrates the P28 antibody detected the P28 protein (arrow).