

Datasheet for ABIN657657

## anti-Metabotropic Glutamate Receptor 6 antibody (AA 369-398)



[Go to Product page](#)

### 1 Image

#### Overview

Quantity:	400 µL
Target:	Metabotropic Glutamate Receptor 6 (GRM6)
Binding Specificity:	AA 369-398
Reactivity:	Human
Host:	Rabbit
Clonality:	Polyclonal
Application:	Western Blotting (WB)

#### Product Details

Immunogen:	This GRM6 antibody is generated from rabbits immunized with a KLH conjugated synthetic peptide between 369-398 amino acids from the Central region of human GRM6.
Clone:	RB33716
Isotype:	Ig Fraction
Purification:	This antibody is purified through a protein A column, followed by peptide affinity purification.

#### Target Details

Target:	Metabotropic Glutamate Receptor 6 (GRM6)
Alternative Name:	GRM6 ( <a href="#">GRM6 Products</a> )
Background:	L-glutamate is the major excitatory neurotransmitter in the central nervous system and activates both ionotropic and metabotropic glutamate receptors. Glutamatergic neurotransmission is involved in most aspects of normal brain function and can be perturbed in

## Target Details

---

many neuropathologic conditions. The metabotropic glutamate receptors are a family of G protein-coupled receptors, that have been divided into 3 groups on the basis of sequence homology, putative signal transduction mechanisms, and pharmacologic properties. Group I includes GRM1 and GRM5 and these receptors have been shown to activate phospholipase C. Group II includes GRM2 and GRM3 while Group III includes GRM4, GRM6, GRM7 and GRM8. Group II and III receptors are linked to the inhibition of the cyclic AMP cascade but differ in their agonist selectivities.

---

Molecular Weight: 95468

---

Gene ID: 2916

---

NCBI Accession: [NP\\_000834](#)

---

UniProt: [O15303](#)

## Application Details

---

Application Notes: WB: 1:1000

---

Restrictions: For Research Use only

## Handling

---

Format: Liquid

---

Buffer: Purified polyclonal antibody supplied in PBS with 0.09 % (W/V) sodium azide.

---

Preservative: Sodium azide

---

Precaution of Use: This product contains Sodium azide: a POISONOUS AND HAZARDOUS SUBSTANCE which should be handled by trained staff only.

---

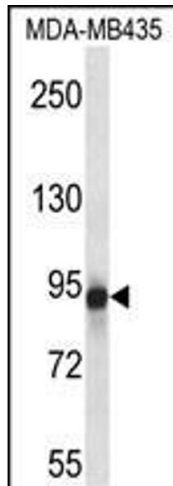
Storage: 4 °C,-20 °C

---

Storage Comment: GRM6 Antibody (Center) can be refrigerated at 2-8 °C for up to 6 months. For long term storage, place the at -20 °C.

---

Expiry Date: 6 months



### Western Blotting

**Image 1.** GRM6 Antibody (Center) (ABIN657657 and ABIN2846651) western blot analysis in MDA-M cell line lysates (35 µg/lane). This demonstrates the GRM6 antibody detected the GRM6 protein (arrow).