

Datasheet for ABIN657668

## anti-Cadherin-16 antibody (C-Term)



[Go to Product page](#)

### 1 Image

#### Overview

Quantity:	400 µL
Target:	Cadherin-16 (CDH16)
Binding Specificity:	AA 796-824, C-Term
Reactivity:	Human
Host:	Rabbit
Clonality:	Polyclonal
Conjugate:	This Cadherin-16 antibody is un-conjugated
Application:	Western Blotting (WB)

#### Product Details

Immunogen:	This CDH16 antibody is generated from rabbits immunized with a KLH conjugated synthetic peptide between 796-824 amino acids from the C-terminal region of human CDH16.
Clone:	RB33734
Isotype:	Ig Fraction
Purification:	This antibody is purified through a protein A column, followed by peptide affinity purification.

#### Target Details

Target:	Cadherin-16 (CDH16)
Alternative Name:	CDH16 ( <a href="#">CDH16 Products</a> )
Background:	This gene is a member of the cadherin superfamily, genes encoding calcium-dependent,

## Target Details

membrane-associated glycoproteins. Mapped to a previously identified cluster of cadherin genes on chromosome 16q22.1, the gene localizes with superfamily members CDH1, CDH3, CDH5, CDH8 and CDH11. The protein consists of an extracellular domain containing 6 cadherin domains, a transmembrane region and a truncated cytoplasmic domain but lacks the prosequence and tripeptide HAV adhesion recognition sequence typical of most classical cadherins. Expression is exclusively in kidney, where the protein functions as the principal mediator of homotypic cellular recognition, playing a role in the morphogenic direction of tissue development.

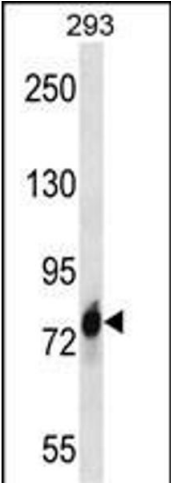
Molecular Weight:	89923
Gene ID:	1014
NCBI Accession:	<a href="#">NP_001191673</a> , <a href="#">NP_001191674</a> , <a href="#">NP_001191675</a> , <a href="#">NP_004053</a>
UniProt:	<a href="#">O75309</a>

## Application Details

Application Notes:	WB: 1:1000
Restrictions:	For Research Use only

## Handling

Format:	Liquid
Buffer:	Purified polyclonal antibody supplied in PBS with 0.09 % (W/V) sodium azide.
Preservative:	Sodium azide
Precaution of Use:	This product contains Sodium azide: a POISONOUS AND HAZARDOUS SUBSTANCE which should be handled by trained staff only.
Storage:	4 °C,-20 °C
Storage Comment:	CDH16 Antibody (C-term) can be refrigerated at 2-8 °C for up to 6 months. For long term storage, place the at -20 °C.
Expiry Date:	6 months



**Western Blotting**

**Image 1.** CDH16 Antibody (C-term) (ABIN657668 and ABIN2846661) western blot analysis in 293 cell line lysates (35 µg/lane). This demonstrates the CDH16 antibody detected the CDH16 protein (arrow).