



[Go to Product page](#)

Datasheet for ABIN657678
anti-PPP4C antibody (AA 160-189)

2 Images

Overview

Quantity:	400 µL
Target:	PPP4C
Binding Specificity:	AA 160-189
Reactivity:	Human
Host:	Rabbit
Clonality:	Polyclonal
Application:	Western Blotting (WB), Immunohistochemistry (Paraffin-embedded Sections) (IHC (p))

Product Details

Immunogen:	This PPP4C antibody is generated from rabbits immunized with a KLH conjugated synthetic peptide between 160-189 amino acids from the Central region of human PPP4C.
Clone:	RB33771
Isotype:	Ig Fraction
Predicted Reactivity:	Zf, B, M, Rb, Rat, X
Purification:	This antibody is purified through a protein A column, followed by peptide affinity purification.

Target Details

Target:	PPP4C
Alternative Name:	PPP4C (PPP4C Products)
Background:	Protein phosphatase that is involved in many processes such as microtubule organization at

Target Details

centrosomes, maturation of spliceosomal snRNPs, apoptosis, tumor necrosis factor (TNF)-alpha signaling, activation of c-Jun N-terminal kinase MAPK8, regulation of histone acetylation, DNA damage checkpoint signaling, NF-kappa-B activation and cell migration. The PPP4C-PPP4R1 PP4 complex may play a role in dephosphorylation and regulation of HDAC3. The PPP4C-PPP4R2-PPP4R3A PP4 complex specifically dephosphorylates H2AFX phosphorylated on Ser-140 (gamma-H2AFX) generated during DNA replication and required for DNA DSB repair. Dephosphorylates NDEL1 at CDK1 phosphorylation sites and negatively regulates CDK1 activity in interphase (By similarity).

Molecular Weight: 35080

Gene ID: 5531

NCBI Accession: [NP_002711](#)

UniProt: [P60510](#)

Application Details

Application Notes: WB: 1:1000. IHC-P: 1:10~50

Restrictions: For Research Use only

Handling

Format: Liquid

Buffer: Purified polyclonal antibody supplied in PBS with 0.09 % (W/V) sodium azide.

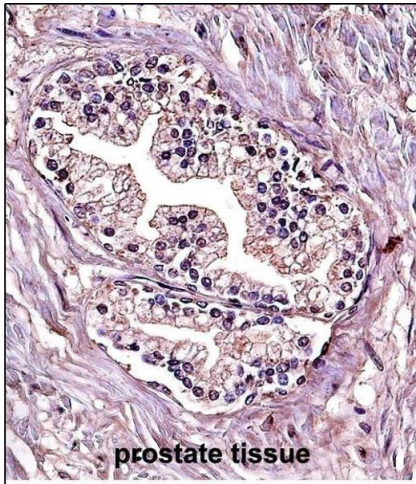
Preservative: Sodium azide

Precaution of Use: This product contains Sodium azide: a POISONOUS AND HAZARDOUS SUBSTANCE which should be handled by trained staff only.

Storage: 4 °C,-20 °C

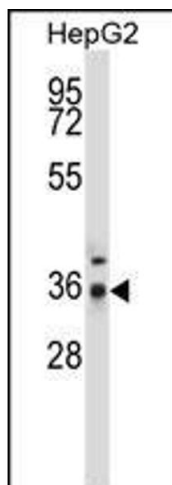
Storage Comment: PPP4C Antibody (Center) can be refrigerated at 2-8 °C for up to 6 months. For long term storage, place the at -20 °C.

Expiry Date: 6 months



Immunohistochemistry (Paraffin-embedded Sections)

Image 1. P4C Antibody (Center) (ABIN657678 and ABIN2846670) immunohistochemistry analysis in formalin fixed and paraffin embedded human prostate tissue followed by peroxidase conjugation of the secondary antibody and DAB staining. This data demonstrates the use of P4C Antibody (Center) for immunohistochemistry. Clinical relevance has not been evaluated.



Western Blotting

Image 2. P4C Antibody (Center) (ABIN657678 and ABIN2846670) western blot analysis in HepG2 cell line lysates (35 µg/lane). This demonstrates the P4C antibody detected the P4C protein (arrow).