

Datasheet for ABIN657682  
**anti-CRMP1 antibody (N-Term)**[Go to Product page](#)

## 2 Images

## Overview

Quantity:	400 µL
Target:	CRMP1
Binding Specificity:	AA 82-110, N-Term
Reactivity:	Human
Host:	Rabbit
Clonality:	Polyclonal
Conjugate:	This CRMP1 antibody is un-conjugated
Application:	Western Blotting (WB), Immunohistochemistry (Paraffin-embedded Sections) (IHC (p))

## Product Details

Immunogen:	This CRMP1 antibody is generated from rabbits immunized with a KLH conjugated synthetic peptide between 82-110 amino acids from the N-terminal region of human CRMP1.
Clone:	RB33780
Isotype:	Ig Fraction
Purification:	This antibody is purified through a protein A column, followed by peptide affinity purification.

## Target Details

Target:	CRMP1
Alternative Name:	CRMP1 ( <a href="#">CRMP1 Products</a> )
Background:	This gene encodes a member of a family of cytosolic phosphoproteins expressed exclusively in

## Target Details

the nervous system. The encoded protein is thought to be a part of the semaphorin signal transduction pathway implicated in semaphorin-induced growth cone collapse during neural development. Alternative splicing results in multiple transcript variants.

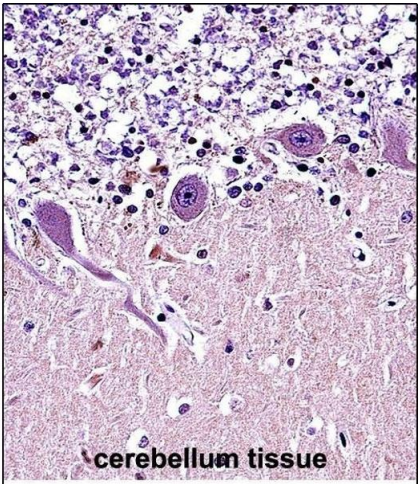
Molecular Weight:	62184
Gene ID:	1400
NCBI Accession:	<a href="#">NP_001014809</a> , <a href="#">NP_001304</a>
UniProt:	<a href="#">Q14194</a>

## Application Details

Application Notes:	WB: 1:1000. IHC-P: 1:10~50
Restrictions:	For Research Use only

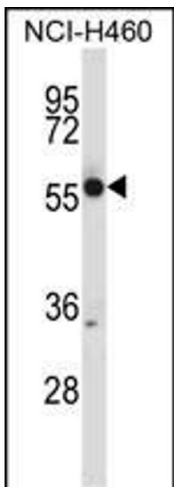
## Handling

Format:	Liquid
Buffer:	Purified polyclonal antibody supplied in PBS with 0.09 % (W/V) sodium azide.
Preservative:	Sodium azide
Precaution of Use:	This product contains Sodium azide: a POISONOUS AND HAZARDOUS SUBSTANCE which should be handled by trained staff only.
Storage:	4 °C, -20 °C
Storage Comment:	CRMP1 Antibody (N-term) can be refrigerated at 2-8 °C for up to 6 months. For long term storage, place the at -20 °C.
Expiry Date:	6 months



**Immunohistochemistry (Paraffin-embedded Sections)**

**Image 1.** CR Antibody (N-term) (ABIN657682 and ABIN2846674) immunohistochemistry analysis in formalin fixed and paraffin embedded human cerebellum tissue followed by peroxidase conjugation of the secondary antibody and DAB staining. This data demonstrates the use of CR Antibody (N-term) for immunohistochemistry. Clinical relevance has not been evaluated.



**Western Blotting**

**Image 2.** CR Antibody (N-term) (ABIN657682 and ABIN2846674) western blot analysis in NCI- cell line lysates (35 µg/lane). This demonstrates the CR antibody detected the CR protein (arrow).