



[Go to Product page](#)

Datasheet for ABIN657684

## anti-RANBP3L antibody (AA 137-165)

### 2 Images

#### Overview

Quantity:	400 µL
Target:	RANBP3L
Binding Specificity:	AA 137-165
Reactivity:	Human
Host:	Rabbit
Clonality:	Polyclonal
Application:	Western Blotting (WB), Immunohistochemistry (Paraffin-embedded Sections) (IHC (p))

#### Product Details

Immunogen:	This RANBP3L antibody is generated from rabbits immunized with a KLH conjugated synthetic peptide between 137-165 amino acids from the Central region of human RANBP3L.
Clone:	RB33820
Isotype:	Ig Fraction
Purification:	This antibody is purified through a protein A column, followed by peptide affinity purification.

#### Target Details

Target:	RANBP3L
Alternative Name:	RANBP3L ( <a href="#">RANBP3L Products</a> )
Background:	The function of this protein remains unknown.
Molecular Weight:	52211

## Target Details

Gene ID:	202151
NCBI Accession:	<a href="#">NP_001154901</a> , <a href="#">NP_659437</a>
UniProt:	<a href="#">Q86VV4</a>

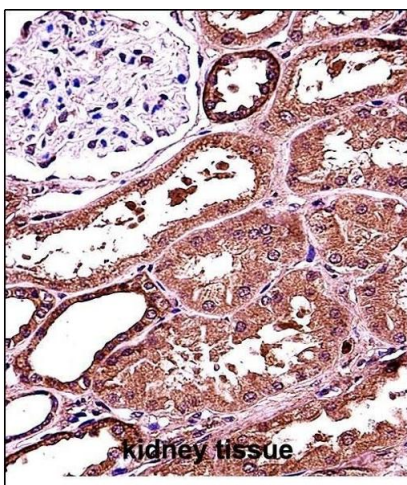
## Application Details

Application Notes:	WB: 1:1000. IHC-P: 1:10~50
Restrictions:	For Research Use only

## Handling

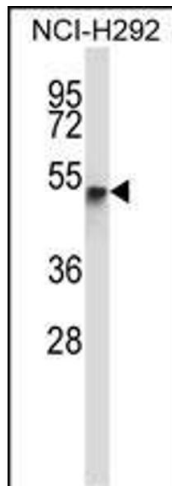
Format:	Liquid
Buffer:	Purified polyclonal antibody supplied in PBS with 0.09 % (W/V) sodium azide.
Preservative:	Sodium azide
Precaution of Use:	This product contains Sodium azide: a POISONOUS AND HAZARDOUS SUBSTANCE which should be handled by trained staff only.
Storage:	4 °C,-20 °C
Storage Comment:	RANBP3L Antibody (Center) can be refrigerated at 2-8 °C for up to 6 months. For long term storage, place the at -20 °C.
Expiry Date:	6 months

## Images



### Immunohistochemistry (Paraffin-embedded Sections)

**Image 1.** RANBP3L Antibody (Center) (ABIN657684 and ABIN2846676) immunohistochemistry analysis in formalin fixed and paraffin embedded human kidney tissue followed by peroxidase conjugation of the secondary antibody and DAB staining. This data demonstrates the use of RANBP3L Antibody (Center) for immunohistochemistry. Clinical relevance has not been evaluated.



### Western Blotting

**Image 2.** RANBP3L Antibody (Center) (ABIN657684 and ABIN2846676) western blot analysis in NCI- cell line lysates (35 µg/lane). This demonstrates the RANBP3L antibody detected the RANBP3L protein (arrow).