



[Go to Product page](#)

Datasheet for ABIN657692

anti-Elastase 3B antibody (N-Term)

2 Images

Overview

| | |
|----------------------|--|
| Quantity: | 400 µL |
| Target: | Elastase 3B (ELA3B) |
| Binding Specificity: | AA 70-98, N-Term |
| Reactivity: | Human |
| Host: | Rabbit |
| Clonality: | Polyclonal |
| Conjugate: | This Elastase 3B antibody is un-conjugated |
| Application: | Western Blotting (WB), Immunohistochemistry (Paraffin-embedded Sections) (IHC (p)) |

Product Details

| | |
|---------------|--|
| Immunogen: | This CELA3B antibody is generated from rabbits immunized with a KLH conjugated synthetic peptide between 70-98 amino acids from the N-terminal region of human CELA3B. |
| Clone: | RB33872 |
| Isotype: | Ig Fraction |
| Purification: | This antibody is purified through a protein A column, followed by peptide affinity purification. |

Target Details

| | |
|-------------------|--|
| Target: | Elastase 3B (ELA3B) |
| Alternative Name: | CELA3B (ELA3B Products) |
| Background: | Elastases form a subfamily of serine proteases that hydrolyze many proteins in addition to |

Target Details

elastin. Humans have six elastase genes which encode the structurally similar proteins elastase 1, 2, 2A, 2B, 3A, and 3B. Unlike other elastases, elastase 3B has little elastolytic activity. Like most of the human elastases, elastase 3B is secreted from the pancreas as a zymogen and, like other serine proteases such as trypsin, chymotrypsin and kallikrein, it has a digestive function in the intestine. Elastase 3B preferentially cleaves proteins after alanine residues. Elastase 3B may also function in the intestinal transport and metabolism of cholesterol. Both elastase 3A and elastase 3B have been referred to as protease E and as elastase 1, and excretion of this protein in fecal material is frequently used as a measure of pancreatic function in clinical assays.

Molecular Weight: 29263

Gene ID: 23436

NCBI Accession: [NP_031378](#)

UniProt: [P08861](#)

Application Details

Application Notes: WB: 1:1000. IHC-P: 1:10~50

Restrictions: For Research Use only

Handling

Format: Liquid

Buffer: Purified polyclonal antibody supplied in PBS with 0.09 % (W/V) sodium azide.

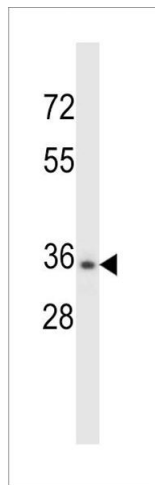
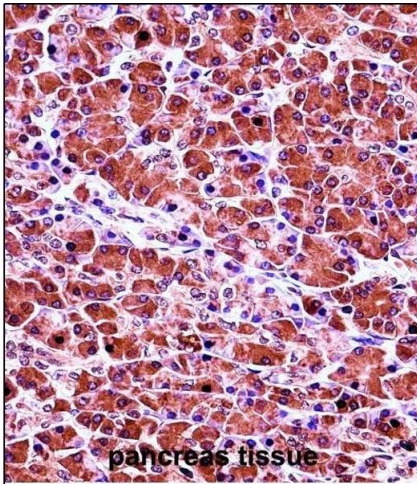
Preservative: Sodium azide

Precaution of Use: This product contains Sodium azide: a POISONOUS AND HAZARDOUS SUBSTANCE which should be handled by trained staff only.

Storage: 4 °C, -20 °C

Storage Comment: CELA3B Antibody (N-term) can be refrigerated at 2-8 °C for up to 6 months. For long term storage, place the at -20 °C.

Expiry Date: 6 months



Immunohistochemistry (Paraffin-embedded Sections)

Image 1. CELA3B Antibody (N-term) (ABIN657692 and ABIN2846683) immunohistochemistry analysis in formalin fixed and paraffin embedded human pancreas tissue followed by peroxidase conjugation of the secondary antibody and DAB staining. This data demonstrates the use of CELA3B Antibody (N-term) for immunohistochemistry. Clinical relevance has not been evaluated.

Western Blotting

Image 2. CELA3B Antibody (N-term) (ABIN657692 and ABIN2846683) western blot analysis in NCI- cell line lysates (35 µg/lane). This demonstrates the CELA3B antibody detected the CELA3B protein (arrow).