

Datasheet for ABIN657706
anti-LAIR1 antibody (AA 177-206)[Go to Product page](#)

1 Image

Overview

Quantity:	400 µL
Target:	LAIR1
Binding Specificity:	AA 177-206
Reactivity:	Human
Host:	Rabbit
Clonality:	Polyclonal
Application:	Western Blotting (WB)

Product Details

Immunogen:	This LAIR1 antibody is generated from rabbits immunized with a KLH conjugated synthetic peptide between 177-206 amino acids from the Central region of human LAIR1.
Clone:	RB33925
Isotype:	Ig Fraction
Purification:	This antibody is purified through a protein A column, followed by peptide affinity purification.

Target Details

Target:	LAIR1
Alternative Name:	LAIR1 (LAIR1 Products)
Background:	The protein encoded by this gene is an inhibitory receptor found on peripheral mononuclear cells, including NK cells, T cells, and B cells. Inhibitory receptors regulate the immune response to prevent lysis of cells recognized as self. The gene is a member of both the immunoglobulin

Target Details

superfamily and the leukocyte-associated inhibitory receptor family. The gene maps to a region of 19q13.4 called the leukocyte receptor cluster, which contains at least 29 genes encoding leukocyte-expressed receptors of the immunoglobulin superfamily.

Molecular Weight: 31412

Gene ID: 3903

NCBI Accession: [NP_002278](#), [NP_068352](#)

UniProt: [Q6GTX8](#)

Application Details

Application Notes: WB: 1:1000

Restrictions: For Research Use only

Handling

Format: Liquid

Buffer: Purified polyclonal antibody supplied in PBS with 0.09 % (W/V) sodium azide.

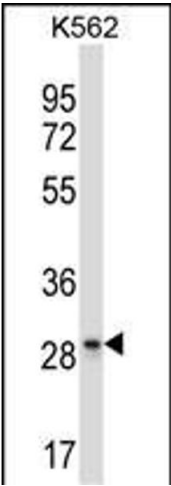
Preservative: Sodium azide

Precaution of Use: This product contains Sodium azide: a POISONOUS AND HAZARDOUS SUBSTANCE which should be handled by trained staff only.

Storage: 4 °C, -20 °C

Storage Comment: LAIR1 Antibody (Center) can be refrigerated at 2-8 °C for up to 6 months. For long term storage, place the at -20 °C.

Expiry Date: 6 months



Western Blotting

Image 1. LAIR1 Antibody (Center) (ABIN657706 and ABIN2846697) western blot analysis in K562 cell line lysates (35 µg/lane). This demonstrates the LAIR1 antibody detected the LAIR1 protein (arrow).