

Datasheet for ABIN657708
anti-RORC antibody (AA 187-216)



[Go to Product page](#)

1 Image

Overview

Quantity:	400 µL
Target:	RORC
Binding Specificity:	AA 187-216
Reactivity:	Human
Host:	Rabbit
Clonality:	Polyclonal
Conjugate:	This RORC antibody is un-conjugated
Application:	Western Blotting (WB)

Product Details

Immunogen:	This RORC antibody is generated from rabbits immunized with a KLH conjugated synthetic peptide between 187-216 amino acids from the Central region of human RORC.
Clone:	RB33929
Isotype:	Ig Fraction
Purification:	This antibody is purified through a protein A column, followed by peptide affinity purification.

Target Details

Target:	RORC
Alternative Name:	RORC (RORC Products)
Background:	The protein encoded by this gene is a DNA-binding transcription factor and is a member of the

Target Details

NR1 subfamily of nuclear hormone receptors. The specific functions of this protein are not known, however, studies of a similar gene in mice have shown that this gene may be essential for lymphoid organogenesis and may play an important regulatory role in thymopoiesis. In addition, studies in mice suggest that the protein encoded by this gene may inhibit the expression of Fas ligand and IL2. Two transcript variants encoding different isoforms have been found for this gene.

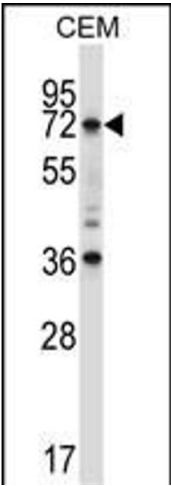
Molecular Weight:	58195
Gene ID:	6097
NCBI Accession:	NP_001001523 , NP_005051
UniProt:	P51449
Pathways:	Nuclear Receptor Transcription Pathway , Steroid Hormone Mediated Signaling Pathway

Application Details

Application Notes:	WB: 1:1000
Restrictions:	For Research Use only

Handling

Format:	Liquid
Buffer:	Purified polyclonal antibody supplied in PBS with 0.09 % (W/V) sodium azide.
Preservative:	Sodium azide
Precaution of Use:	This product contains Sodium azide: a POISONOUS AND HAZARDOUS SUBSTANCE which should be handled by trained staff only.
Storage:	4 °C,-20 °C
Storage Comment:	RORC Antibody (Center) can be refrigerated at 2-8 °C for up to 6 months. For long term storage, place the at -20 °C.
Expiry Date:	6 months



Western Blotting

Image 1. RORC Antibody (Center) (ABIN657708 and ABIN2846699) western blot analysis in CEM cell line lysates (35 µg/lane). This demonstrates the RORC antibody detected the RORC protein (arrow).