

Datasheet for ABIN657709  
**anti-GDI2 antibody (AA 135-164)**[Go to Product page](#)

## 2 Images

## Overview

Quantity:	400 µL
Target:	GDI2
Binding Specificity:	AA 135-164
Reactivity:	Human
Host:	Rabbit
Clonality:	Polyclonal
Application:	Western Blotting (WB), Immunohistochemistry (Paraffin-embedded Sections) (IHC (p))

## Product Details

Immunogen:	This GDI2 antibody is generated from rabbits immunized with a KLH conjugated synthetic peptide between 135-164 amino acids from the Central region of human GDI2.
Clone:	RB33933
Isotype:	IgG
Purification:	This antibody is purified through a protein A column, followed by peptide affinity purification.

## Target Details

Target:	GDI2
Alternative Name:	GDI2 ( <a href="#">GDI2 Products</a> )
Background:	GDP dissociation inhibitors are proteins that regulate the GDP-GTP exchange reaction of members of the rab family, small GTP-binding proteins of the ras superfamily, that are involved in vesicular trafficking of molecules between cellular organelles. GDIs slow the rate of

## Target Details

dissociation of GDP from rab proteins and release GDP from membrane-bound rabs. GDI2 is ubiquitously expressed. The GDI2 gene contains many repetitive elements indicating that it may be prone to inversion/deletion rearrangements. Alternative splicing results in multiple transcript variants encoding distinct isoforms.

Molecular Weight: 50663

Gene ID: 2665

NCBI Accession: [NP\\_001108628](#), [NP\\_001485](#)

UniProt: [P50395](#)

## Application Details

Application Notes: WB: 1:1000. IHC-P: 1:10~50

Restrictions: For Research Use only

## Handling

Format: Liquid

Buffer: Purified polyclonal antibody supplied in PBS with 0.09 % (W/V) sodium azide.

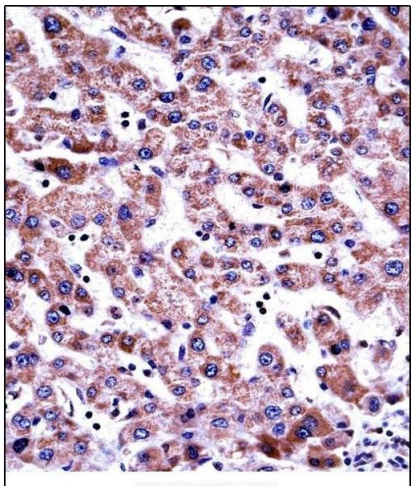
Preservative: Sodium azide

Precaution of Use: This product contains Sodium azide: a POISONOUS AND HAZARDOUS SUBSTANCE which should be handled by trained staff only.

Storage: 4 °C, -20 °C

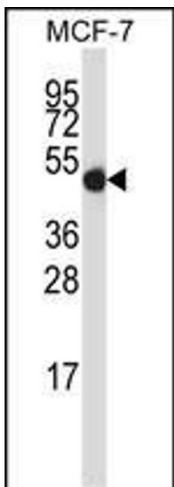
Storage Comment: GDI2 Antibody (Center) can be refrigerated at 2-8 °C for up to 6 months. For long term storage, place the at -20 °C.

Expiry Date: 6 months



**Immunohistochemistry (Paraffin-embedded Sections)**

**Image 1.** GDI2 Antibody (Center) ((ABIN657709 and ABIN2846700))immunohistochemistry analysis in formalin fixed and paraffin embedded human liver tissue followed by peroxidase conjugation of the secondary antibody and DAB staining.This data demonstrates the use of GDI2 Antibody (Center) for immunohistochemistry. Clinical relevance has not been evaluated.



**Western Blotting**

**Image 2.** GDI2 Antibody (Center) (ABIN657709 and ABIN2846700) western blot analysis in MCF-7 cell line lysates (35 µg/lane).This demonstrates the GDI2 antibody detected the GDI2 protein (arrow).