

Datasheet for ABIN657715
anti-SCGB1D2 antibody (AA 22-50)[Go to Product page](#)

1 Image

Overview

Quantity:	400 µL
Target:	SCGB1D2
Binding Specificity:	AA 22-50
Reactivity:	Human
Host:	Rabbit
Clonality:	Polyclonal
Application:	Western Blotting (WB)

Product Details

Immunogen:	This SCGB1D2 antibody is generated from rabbits immunized with a KLH conjugated synthetic peptide between 22-50 amino acids from the Central region of human SCGB1D2.
Clone:	RB34010
Isotype:	Ig Fraction
Purification:	This antibody is purified through a protein A column, followed by peptide affinity purification.

Target Details

Target:	SCGB1D2
Alternative Name:	SCGB1D2 (SCGB1D2 Products)
Background:	The protein encoded by this gene is a member of the lipophilin subfamily, part of the uteroglobin superfamily, and is an ortholog of prostatein, the major secretory glycoprotein of the rat ventral prostate gland. Lipophilin gene products are widely expressed in normal tissues,

Target Details

especially in endocrine-responsive organs. Assuming that human lipophilins are the functional counterparts of prostatein, they may be transcriptionally regulated by steroid hormones, with the ability to bind androgens, other steroids and possibly bind and concentrate estramustine, a chemotherapeutic agent widely used for prostate cancer. Although the gene has been reported to be on chromosome 10, this sequence appears to be from a cluster of genes on chromosome 11 that includes mammaglobin 2.

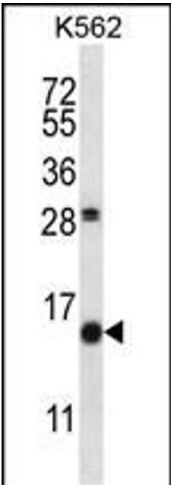
Molecular Weight:	9925
Gene ID:	10647
NCBI Accession:	NP_006542
UniProt:	O95969

Application Details

Application Notes:	WB: 1:1000
Restrictions:	For Research Use only

Handling

Format:	Liquid
Buffer:	Purified polyclonal antibody supplied in PBS with 0.09 % (W/V) sodium azide.
Preservative:	Sodium azide
Precaution of Use:	This product contains Sodium azide: a POISONOUS AND HAZARDOUS SUBSTANCE which should be handled by trained staff only.
Storage:	4 °C, -20 °C
Storage Comment:	SCGB1D2 Antibody (Center) can be refrigerated at 2-8 °C for up to 6 months. For long term storage, place the at -20 °C.
Expiry Date:	6 months



Western Blotting

Image 1. SCGB1D2 Antibody (Center) (ABIN657715 and ABIN2846703) western blot analysis in K562 cell line lysates (35 µg/lane). This demonstrates the SCGB1D2 antibody detected the SCGB1D2 protein (arrow).