

Datasheet for ABIN657721  
**anti-CAMK2D antibody (AA 221-250)**

## 4 Images

[Go to Product page](#)

## Overview

|                      |  |
|----------------------|--|
| Quantity:            | 400 µL   |
| Target:              | CAMK2D   |
| Binding Specificity: | AA 221-250   |
| Reactivity:          | Human, Mouse   |
| Host:                | Rabbit   |
| Clonality:           | Polyclonal   |
| Application:         | Western Blotting (WB), Immunohistochemistry (Paraffin-embedded Sections) (IHC (p)) |

## Product Details

|                       |   |
|-----------------------|---|
| Immunogen:            | This Mouse Camk2d antibody is generated from rabbits immunized with a KLH conjugated synthetic peptide between 221-250 amino acids from the Central region of mouse Camk2d. |
| Clone:                | RB34171   |
| Isotype:              | Ig Fraction   |
| Predicted Reactivity: | Zf, Rat, B, C, Pig, Rb, X   |
| Purification:         | This antibody is purified through a protein A column, followed by peptide affinity purification.  |

## Target Details

|                   |   |
|-------------------|---|
| Target:           | CAMK2D  |
| Alternative Name: | Camk2d ( <a href="#">CAMK2D Products</a> )  |
| Background:       | CaM-kinase II (CAMK2) is a prominent kinase in the central nervous system that may function |

## Target Details

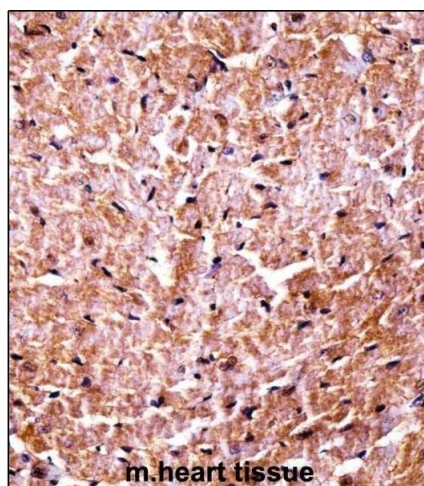
|                   |   |
|-------------------|---|
|                   | in long-term potentiation and neurotransmitter release (By similarity).   |
| Molecular Weight: | 56369   |
| Gene ID:          | 108058  |
| NCBI Accession:   | <a href="#">NP_001020609</a> , <a href="#">NP_001020610</a> , <a href="#">NP_076302</a>   |
| UniProt:          | <a href="#">Q6PHZ2</a>  |
| Pathways:         | <a href="#">WNT Signaling</a> , <a href="#">Interferon-gamma Pathway</a> , <a href="#">Myometrial Relaxation and Contraction</a> , <a href="#">Smooth Muscle Cell Migration</a> |

## Application Details

|                    |  |
|--------------------|--|
| Application Notes: | WB: 1:1000. WB: 1:1000. WB: 1:1000. IHC-P: 1:10~50 |
| Restrictions:      | For Research Use only                              |

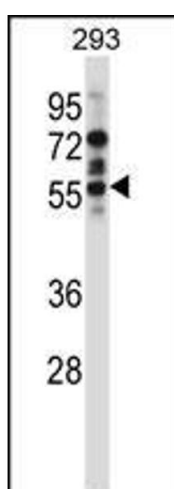
## Handling

|                    |  |
|--------------------|--|
| Format:            | Liquid   |
| Buffer:            | Purified polyclonal antibody supplied in PBS with 0.09 % (W/V) sodium azide.   |
| Preservative:      | Sodium azide   |
| Precaution of Use: | This product contains Sodium azide: a POISONOUS AND HAZARDOUS SUBSTANCE which should be handled by trained staff only.       |
| Storage:           | 4 °C, -20 °C   |
| Storage Comment:   | Mouse Camk2d Antibody (Center) can be refrigerated at 2-8 °C for up to 6 months. For long term storage, place the at -20 °C. |
| Expiry Date:       | 6 months   |



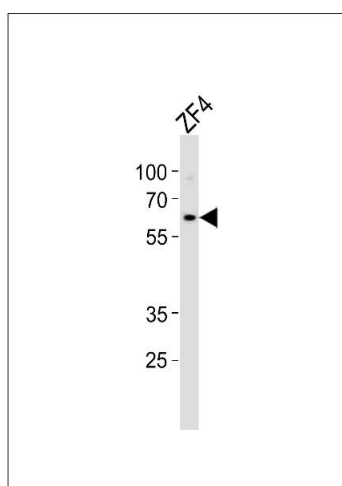
### Immunohistochemistry (Paraffin-embedded Sections)

**Image 1.** Mouse Camk2d Antibody (Center) ((ABIN657721 and ABIN2846708)) immunohistochemistry analysis in formalin fixed and paraffin embedded mouse heart tissue followed by peroxidase conjugation of the secondary antibody and DAB staining. This data demonstrates the use of Mouse Camk2d Antibody (Center) for immunohistochemistry. Clinical relevance has not been evaluated.



### Western Blotting

**Image 2.** Mouse Camk2d Antibody (Center) (ABIN657721 and ABIN2846708) western blot analysis in 293 cell line lysates (35 µg/lane). This demonstrates the Camk2d antibody detected the Camk2d protein (arrow).



### Western Blotting

**Image 3.** Western blot analysis of lysate from ZF4 cell line, using (DANRE) camk2d2 Antibody (ABIN657721 and ABIN2846708). (ABIN657721 and ABIN2846708) was diluted at 1:1000. A goat anti-rabbit IgG H&L(HRP) at 1:10000 dilution was used as the secondary antibody. Lysate at 35 µg.

Please check the [product details page](#) for more images. Overall 4 images are available for ABIN657721.