

Datasheet for ABIN657730  
**anti-AP1G2 antibody (N-Term)**[Go to Product page](#)

## 1 Image

## Overview

Quantity:	400 µL
Target:	AP1G2
Binding Specificity:	AA 1-30, N-Term
Reactivity:	Human
Host:	Rabbit
Clonality:	Polyclonal
Conjugate:	This AP1G2 antibody is un-conjugated
Application:	Western Blotting (WB)

## Product Details

Immunogen:	This AP1G2 antibody is generated from rabbits immunized with a KLH conjugated synthetic peptide between 1-30 amino acids from the N-terminal region of human AP1G2.
Clone:	RB31293
Isotype:	Ig Fraction
Purification:	This antibody is purified through a protein A column, followed by peptide affinity purification.

## Target Details

Target:	AP1G2
Alternative Name:	AP1G2 ( <a href="#">AP1G2 Products</a> )
Background:	Adaptins are important components of clathrin-coated vesicles transporting ligand-receptor

## Target Details

complexes from the plasma membrane or from the trans-Golgi network to lysosomes. The adaptin family of proteins is composed of four classes of molecules named alpha, beta-, beta prime- and gamma- adaptins. Adaptins, together with medium and small subunits, form a heterotetrameric complex called an adaptor, whose role is to promote the formation of clathrin-coated pits and vesicles. The protein encoded by this gene is a gamma-adaptin protein and it belongs to the adaptor complexes large subunits family. This protein along with the complex is thought to function at some trafficking step in the complex pathways between the trans-Golgi network and the cell surface. There are two alternatively spliced transcript variants of this gene encoding the same protein.

Molecular Weight:	87117
-------------------	-------

Gene ID:	8906
----------	------

NCBI Accession:	<a href="#">NP_003908</a>
-----------------	---------------------------

UniProt:	<a href="#">O75843</a>
----------	------------------------

## Application Details

Application Notes:	WB: 1:1000
--------------------	------------

Restrictions:	For Research Use only
---------------	-----------------------

## Handling

Format:	Liquid
---------	--------

Buffer:	Purified polyclonal antibody supplied in PBS with 0.09 % (W/V) sodium azide.
---------	--

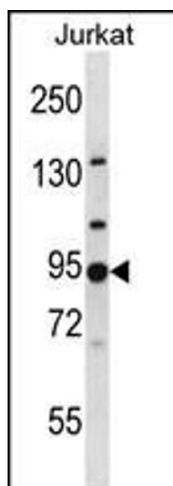
Preservative:	Sodium azide
---------------	--------------

Precaution of Use:	This product contains Sodium azide: a POISONOUS AND HAZARDOUS SUBSTANCE which should be handled by trained staff only.
--------------------	--

Storage:	4 °C, -20 °C
----------	--------------

Storage Comment:	AP2A1 Antibody (C-term) can be refrigerated at 2-8 °C for up to 6 months. For long term storage, place the at -20 °C.
------------------	---

Expiry Date:	6 months
--------------	----------



#### Western Blotting

**Image 1.** G2 Antibody (N-term) 3809a western blot analysis in Jurkat cell line lysates (35 µg/lane). This demonstrates the G2 antibody detected the G2 protein (arrow).