

Datasheet for ABIN657735
anti-EHD1 antibody (C-Term)

2 Images

[Go to Product page](#)

Overview

Quantity:	400 µL
Target:	EHD1
Binding Specificity:	AA 410-438, C-Term
Reactivity:	Human
Host:	Rabbit
Clonality:	Polyclonal
Application:	Western Blotting (WB)

Product Details

Immunogen:	This EHD1 antibody is generated from rabbits immunized with a KLH conjugated synthetic peptide between 410-438 amino acids from the C-terminal region of human EHD1.
Clone:	RB32073
Isotype:	Ig Fraction
Predicted Reactivity:	B, M, Rat
Purification:	This antibody is purified through a protein A column, followed by peptide affinity purification.

Target Details

Target:	EHD1
Alternative Name:	EHD1 (EHD1 Products)
Background:	This gene belongs to a highly conserved gene family encoding EPS15 homology (EH) domain-

Target Details

containing proteins. The protein-binding EH domain was first noted in EPS15, a substrate for the epidermal growth factor receptor. The EH domain has been shown to be an important motif in proteins involved in protein-protein interactions and in intracellular sorting. The protein encoded by this gene is thought to play a role in the endocytosis of IGF1 receptors.

Molecular Weight: 60627

Gene ID: 10938

NCBI Accession: [NP_001269373](#), [NP_001269374](#), [NP_006786](#)

UniProt: [Q9H4M9](#)

Pathways: [Regulation of Muscle Cell Differentiation](#), [Skeletal Muscle Fiber Development](#)

Application Details

Application Notes: WB: 1:1000. WB: 1:1000

Restrictions: For Research Use only

Handling

Format: Liquid

Buffer: Purified polyclonal antibody supplied in PBS with 0.09 % (W/V) sodium azide.

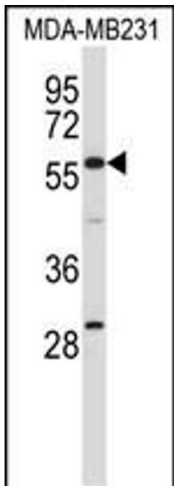
Preservative: Sodium azide

Precaution of Use: This product contains Sodium azide: a POISONOUS AND HAZARDOUS SUBSTANCE which should be handled by trained staff only.

Storage: 4 °C,-20 °C

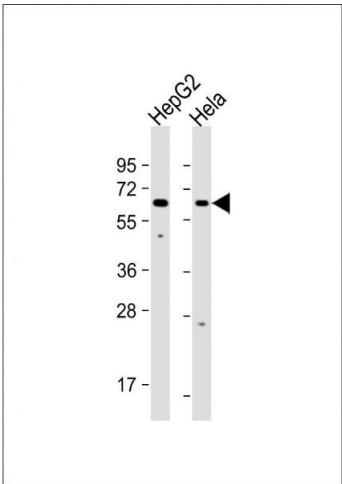
Storage Comment: EHD1 Antibody (C-term) can be refrigerated at 2-8 °C for up to 6 months. For long term storage, place the at -20 °C.

Expiry Date: 6 months



Western Blotting

Image 1. EHD1 Antibody (C-term) (ABIN657735 and ABIN2846720) western blot analysis in MDA-M cell line lysates (35 µg/lane). This demonstrates the EHD1 antibody detected the EHD1 protein (arrow).



Western Blotting

Image 2. All lanes : Anti-EHD1 Antibody (C-term) at 1:1000 dilution Lane 1: HepG2 whole cell lysate Lane 2: HeLa whole cell lysate Lysates/proteins at 20 µg per lane. Secondary Goat Anti-Rabbit IgG, (H+L), Peroxidase conjugated at 1/10000 dilution. Predicted band size : 61 kDa Blocking/Dilution buffer: 5 % NFDM/TBST.