

Datasheet for ABIN657739
anti-LY6E antibody (AA 41-70)[Go to Product page](#)

1 Image

Overview

Quantity:	400 µL
Target:	LY6E
Binding Specificity:	AA 41-70
Reactivity:	Human
Host:	Rabbit
Clonality:	Polyclonal
Conjugate:	This LY6E antibody is un-conjugated
Application:	Western Blotting (WB)

Product Details

Immunogen:	This LY6E antibody is generated from rabbits immunized with a KLH conjugated synthetic peptide between 41-70 amino acids from the Central region of human LY6E.
Clone:	RB32741
Isotype:	Ig Fraction
Purification:	This antibody is purified through a protein A column, followed by peptide affinity purification.

Target Details

Target:	LY6E
Alternative Name:	LY6E (LY6E Products)
Background:	Sca1, also known as Ly6A/E, is a member of the Ly6 multigene family of type V

Target Details

glycophosphatidylinositol anchored cell surface proteins. It is expressed on multipotent hematopoietic stem cells in bone marrow of mice with both the Ly6.1 and Ly6.2 allotypes. In the periphery, Sca1 exhibits a pattern of expression which is based on differences between the two allotypes. Ly6.1 strains (e.g., A, BALB/c, CBA, C3H/He, DBA/1, NZB) have few Sca1+ resting peripheral lymphocytes, whereas Ly6.2 strains (e.g., AKR, C57BL, C57BR, C57L, DBA/2, PL, SJL, SWR, 129) have relatively high numbers of Sca1+ lymphocytes. The expression of Sca1 is dramatically upregulated in all strains upon cellular activation.

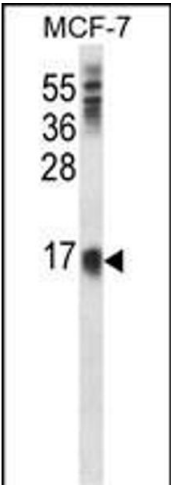
Molecular Weight:	13507
Gene ID:	4061
NCBI Accession:	NP_001120685 , NP_002337
UniProt:	Q16553
Pathways:	Hormone Transport

Application Details

Application Notes:	WB: 1:1000
Restrictions:	For Research Use only

Handling

Format:	Liquid
Buffer:	Purified polyclonal antibody supplied in PBS with 0.09 % (W/V) sodium azide.
Preservative:	Sodium azide
Precaution of Use:	This product contains Sodium azide: a POISONOUS AND HAZARDOUS SUBSTANCE which should be handled by trained staff only.
Storage:	4 °C,-20 °C
Storage Comment:	LY6E Antibody (Center) can be refrigerated at 2-8 °C for up to 6 months. For long term storage, place the at -20 °C.
Expiry Date:	6 months



Western Blotting

Image 1. LY6E Antibody (Center) (ABIN657739 and ABIN2846723) western blot analysis in MCF-7 cell line lysates (35 µg/lane). This demonstrates the LY6E antibody detected the LY6E protein (arrow).