



[Go to Product page](#)

Datasheet for ABIN657745
anti-UBE2E2 antibody (N-Term)

2 Images

Overview

Quantity:	400 µL
Target:	UBE2E2
Binding Specificity:	AA 16-43, N-Term
Reactivity:	Human, Mouse
Host:	Rabbit
Clonality:	Polyclonal
Application:	Western Blotting (WB), Flow Cytometry (FACS)

Product Details

Immunogen:	This UBE2E2 antibody is generated from rabbits immunized with a KLH conjugated synthetic peptide between 16-43 amino acids from the N-terminal region of human UBE2E2.
Clone:	RB32993
Isotype:	Ig Fraction
Purification:	This antibody is purified through a protein A column, followed by peptide affinity purification.

Target Details

Target:	UBE2E2
Alternative Name:	UBE2E2 (UBE2E2 Products)
Background:	Accepts ubiquitin from the E1 complex and catalyzes its covalent attachment to other proteins. In vitro catalyzes 'Lys-11'-and 'Lys-48', as well as 'Lys-63'-linked polyubiquitination.

Target Details

Molecular Weight: 22255

Gene ID: 7325

NCBI Accession: [NP_689866](#)

UniProt: [Q96LR5](#)

Application Details

Application Notes: WB: 1:1000. FC: 1:10~50

Restrictions: For Research Use only

Handling

Format: Liquid

Buffer: Purified polyclonal antibody supplied in PBS with 0.09 % (W/V) sodium azide.

Preservative: Sodium azide

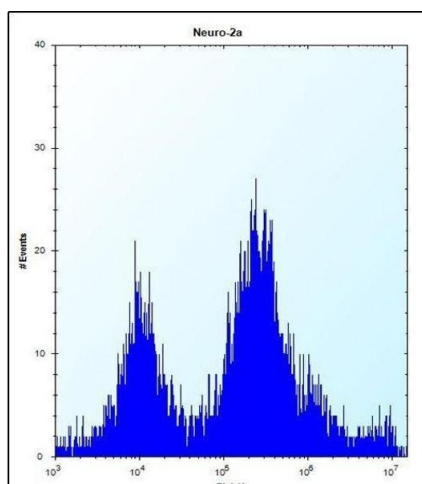
Precaution of Use: This product contains Sodium azide: a POISONOUS AND HAZARDOUS SUBSTANCE which should be handled by trained staff only.

Storage: 4 °C, -20 °C

Storage Comment: UBE2E2 Antibody (N-term) can be refrigerated at 2-8 °C for up to 6 months. For long term storage, place the at -20 °C.

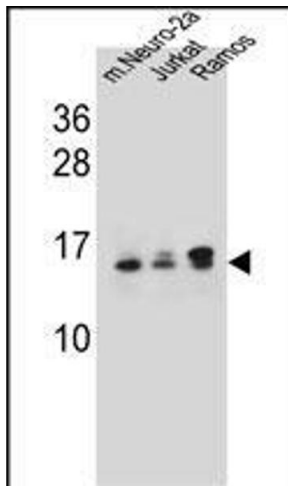
Expiry Date: 6 months

Images



Flow Cytometry

Image 1. UBE2E2 Antibody (N-term) (ABIN657745 and ABIN2846729) flow cytometric analysis of Neuro-2a cells (right histogram) compared to a negative control cell (left histogram). FITC-conjugated donkey-anti-rabbit secondary antibodies were used for the analysis.



Western Blotting

Image 2. UBE2E2 Antibody (N-term) (ABIN657745 and ABIN2846729) western blot analysis in mouse Neuro-2a, Jurkat, Ramos cell line lysates (35 µg/lane). This demonstrates the UBE2E2 antibody detected the UBE2E2 protein (arrow).