

Datasheet for ABIN657748
anti-DCBLD2 antibody (C-Term)



[Go to Product page](#)

2 Images

Overview

Quantity:	400 µL
Target:	DCBLD2
Binding Specificity:	AA 538-567, C-Term
Reactivity:	Human, Mouse
Host:	Rabbit
Clonality:	Polyclonal
Application:	Western Blotting (WB), Flow Cytometry (FACS)

Product Details

Immunogen:	This DCBLD2 antibody is generated from rabbits immunized with a KLH conjugated synthetic peptide between 538-567 amino acids from the C-terminal region of human DCBLD2.
Clone:	RB33062
Isotype:	Ig Fraction
Purification:	This antibody is purified through a protein A column, followed by peptide affinity purification.

Target Details

Target:	DCBLD2
Alternative Name:	DCBLD2 (DCBLD2 Products)
Background:	DCBLD2, otherwise known as ESDN (endothelial and smooth muscle cell-derived neuropilin-like molecule) is a novel type-I transmembrane protein with the longest cleavable secretory signal sequence among eukaryotes. It is expressed in various tissues, particularly highly expressed in

Target Details

cultured vascular smooth muscle cells. DCBLD2 is considered to play a role in regulation of vascular cell growth and may have a wide variety of functions in other tissues including the nervous system, like neuropilins.

Molecular Weight: 85035

Gene ID: 131566

NCBI Accession: [NP_563615](#)

UniProt: [Q96PD2](#)

Application Details

Application Notes: WB: 1:1000. FC: 1:10~50

Restrictions: For Research Use only

Handling

Format: Liquid

Buffer: Purified polyclonal antibody supplied in PBS with 0.09 % (W/V) sodium azide.

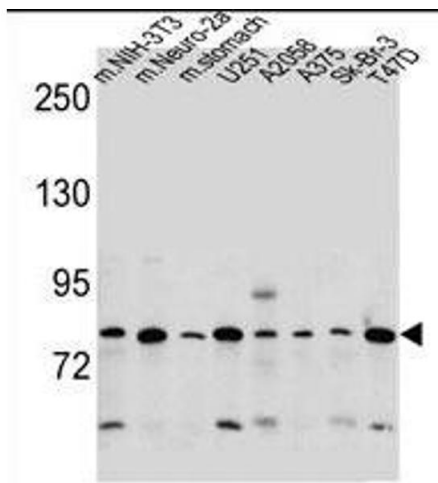
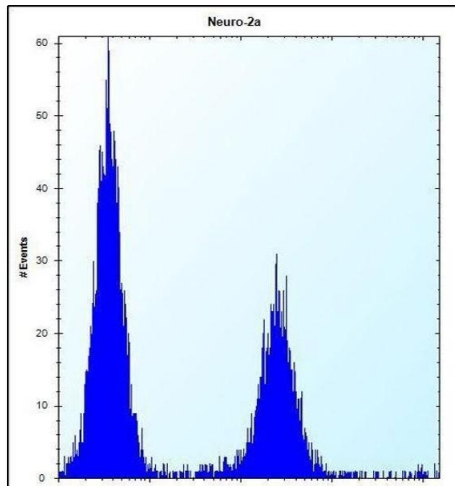
Preservative: Sodium azide

Precaution of Use: This product contains Sodium azide: a POISONOUS AND HAZARDOUS SUBSTANCE which should be handled by trained staff only.

Storage: 4 °C, -20 °C

Storage Comment: DCBLD2 Antibody (C-term) can be refrigerated at 2-8 °C for up to 6 months. For long term storage, place the at -20 °C.

Expiry Date: 6 months



Flow Cytometry

Image 1. DCBLD2 Antibody (C-term) (ABIN657748 and ABIN2846732) flow cytometric analysis of Neuro-2a cells (right histogram) compared to a negative control cell (left histogram). FITC-conjugated donkey-anti-rabbit secondary antibodies were used for the analysis.

Western Blotting

Image 2. DCBLD2 Antibody (C-term) (ABIN657748 and ABIN2846732) western blot analysis in mouse NIH-3T3, Neuro-2a cell line and mouse stomach tissue and „Sk-Br-3, T47D cell line lysates (35 µg/lane). This demonstrates the DCBLD2 antibody detected the DCBLD2 protein (arrow).