

Datasheet for ABIN657749
anti-POF1B antibody (AA 337-366)[Go to Product page](#)

1 Image

Overview

Quantity:	400 µL
Target:	POF1B
Binding Specificity:	AA 337-366
Reactivity:	Mouse
Host:	Rabbit
Clonality:	Polyclonal
Application:	Western Blotting (WB)

Product Details

Immunogen:	This POF1B antibody is generated from rabbits immunized with a KLH conjugated synthetic peptide between 337-366 amino acids from the Central region of human POF1B.
Clone:	RB33064
Isotype:	Ig Fraction
Purification:	This antibody is purified through a protein A column, followed by peptide affinity purification.

Target Details

Target:	POF1B
Alternative Name:	POF1B (POF1B Products)
Background:	Premature ovarian failure (POF) is characterized by primary or secondary amenorrhea in women less than 40 years old. Two POF susceptibility regions called 'POF1' and 'POF2' have been identified by breakpoint mapping of X-autosome translocations. POF1 extends from Xq21-

Target Details

qter while POF2 extends from Xq13.3 to Xq21.1. This gene, POF1B, resides in the POF2 region. This gene is expressed at trace levels in mouse prenatal ovary and is barely detectable or absent from adult ovary, in human and in the mouse respectively. This gene's expression is restricted to epithelia with its highest expression in the epidermis, and oro-pharyngeal and gastro-intestinal tracts. The protein encoded by this gene binds non-muscle actin filaments. The role this gene may play in the etiology of premature ovarian failure remains to be determined.

Molecular Weight:	68065
-------------------	-------

Gene ID:	79983
----------	-------

NCBI Accession:	NP_079197
-----------------	---------------------------

UniProt:	Q8WVV4
----------	------------------------

Application Details

Application Notes:	WB: 1:1000
--------------------	------------

Restrictions:	For Research Use only
---------------	-----------------------

Handling

Format:	Liquid
---------	--------

Buffer:	Purified polyclonal antibody supplied in PBS with 0.09 % (W/V) sodium azide.
---------	--

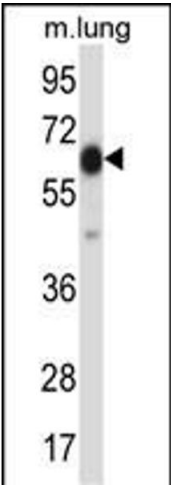
Preservative:	Sodium azide
---------------	--------------

Precaution of Use:	This product contains Sodium azide: a POISONOUS AND HAZARDOUS SUBSTANCE which should be handled by trained staff only.
--------------------	--

Storage:	4 °C,-20 °C
----------	-------------

Storage Comment:	POF1B Antibody (Center) can be refrigerated at 2-8 °C for up to 6 months. For long term storage, place the at -20 °C.
------------------	---

Expiry Date:	6 months
--------------	----------



Western Blotting

Image 1. POF1B Antibody (Center) (ABIN657749 and ABIN2846733) western blot analysis in mouse lung tissue lysates (35 µg/lane). This demonstrates the POF1B antibody detected the POF1B protein (arrow).