

Datasheet for ABIN657753
anti-SLC41A2 antibody (N-Term)

2 Images

[Go to Product page](#)

Overview

Quantity:	400 µL
Target:	SLC41A2
Binding Specificity:	AA 35-63, N-Term
Reactivity:	Human
Host:	Rabbit
Clonality:	Polyclonal
Conjugate:	This SLC41A2 antibody is un-conjugated
Application:	Western Blotting (WB), Immunohistochemistry (Paraffin-embedded Sections) (IHC (p))

Product Details

Immunogen:	This SLC41A2 antibody is generated from rabbits immunized with a KLH conjugated synthetic peptide between 35-63 amino acids from the N-terminal region of human SLC41A2.
Clone:	RB33381
Isotype:	Ig Fraction
Predicted Reactivity:	Pr
Purification:	This antibody is purified through a protein A column, followed by peptide affinity purification.

Target Details

Target:	SLC41A2
Alternative Name:	SLC41A2 (SLC41A2 Products)

Target Details

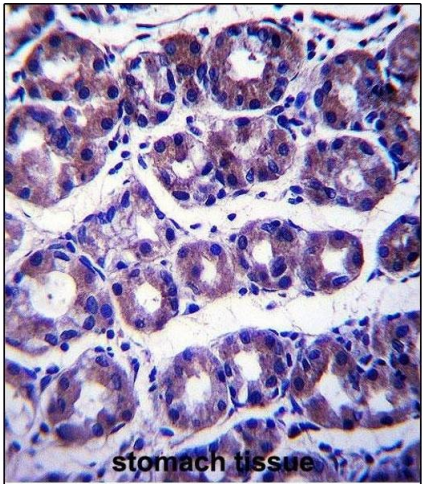
Background:	SLC41A2 acts as a plasma-membrane magnesium transporter.
Molecular Weight:	62473
Gene ID:	84102
NCBI Accession:	NP_115524
UniProt:	Q96JW4

Application Details

Application Notes:	WB: 1:1000. IHC-P: 1:10~50
Restrictions:	For Research Use only

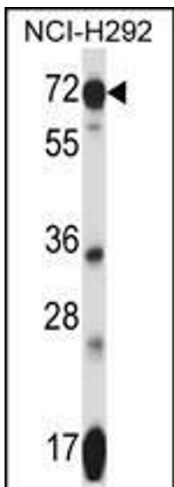
Handling

Format:	Liquid
Buffer:	Purified polyclonal antibody supplied in PBS with 0.09 % (W/V) sodium azide.
Preservative:	Sodium azide
Precaution of Use:	This product contains Sodium azide: a POISONOUS AND HAZARDOUS SUBSTANCE which should be handled by trained staff only.
Storage:	4 °C,-20 °C
Storage Comment:	SLC41A2 Antibody (N-term) can be refrigerated at 2-8 °C for up to 6 months. For long term storage, place the at -20 °C.
Expiry Date:	6 months



Immunohistochemistry (Paraffin-embedded Sections)

Image 1. SLC41A2 Antibody (N-term) (ABIN657753 and ABIN2846735) immunohistochemistry analysis in formalin fixed and paraffin embedded human stomach tissue followed by peroxidase conjugation of the secondary antibody and DAB staining. This data demonstrates the use of SLC41A2 Antibody (N-term) for immunohistochemistry. Clinical relevance has not been evaluated.



Western Blotting

Image 2. SLC41A2 Antibody (N-term) (ABIN657753 and ABIN2846735) western blot analysis in NCI- cell line lysates (35 µg/lane). This demonstrates the SLC41A2 antibody detected the SLC41A2 protein (arrow).