



[Go to Product page](#)

Datasheet for ABIN657757  
**anti-XPA antibody (C-Term)**

3 Images

### Overview

Quantity:	400 µL
Target:	XPA
Binding Specificity:	AA 185-213, C-Term
Reactivity:	Human
Host:	Rabbit
Clonality:	Polyclonal
Application:	Western Blotting (WB)

### Product Details

Immunogen:	This XPA antibody is generated from rabbits immunized with a KLH conjugated synthetic peptide between 185-213 amino acids from the C-terminal region of human XPA.
Clone:	RB33699
Isotype:	Ig Fraction
Purification:	This antibody is purified through a protein A column, followed by peptide affinity purification.

### Target Details

Target:	XPA
Alternative Name:	XPA ( <a href="#">XPA Products</a> )
Background:	This gene encodes a zinc finger protein involved in DNA excision repair. The encoded protein is part of the NER (nucleotide excision repair) complex which is responsible for repair of UV radiation-induced photoproducts and DNA adducts induced by chemical carcinogens.

## Target Details

---

Mutations in this gene are associated with xeroderma pigmentosum complementation group A. Alternatively spliced transcript variants have been found for this gene. [provided by RefSeq].

Molecular Weight: 31368

Gene ID: 7507

NCBI Accession: [NP\\_000371](#)

UniProt: [P23025](#)

Pathways: [DNA Damage Repair](#)

## Application Details

---

Application Notes: WB: 1:1000. WB: 1:1000. WB: 1:1000

Restrictions: For Research Use only

## Handling

---

Format: Liquid

Buffer: Purified polyclonal antibody supplied in PBS with 0.09 % (W/V) sodium azide.

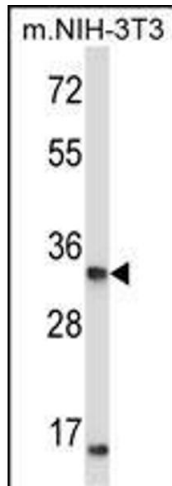
Preservative: Sodium azide

Precaution of Use: This product contains Sodium azide: a POISONOUS AND HAZARDOUS SUBSTANCE which should be handled by trained staff only.

Storage: 4 °C, -20 °C

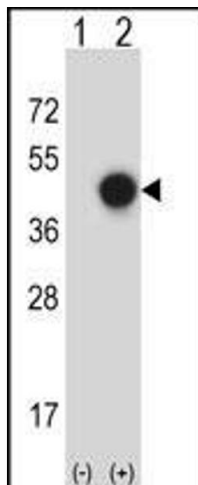
Storage Comment: XPA Antibody (C-term) can be refrigerated at 2-8 °C for up to 6 months. For long term storage, place the at -20 °C.

Expiry Date: 6 months



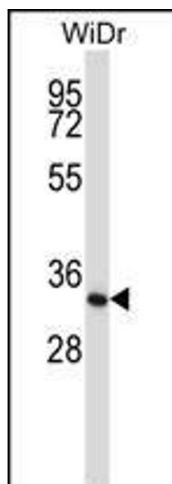
### Western Blotting

**Image 1.** X Antibody (C-term) (ABIN657757 and ABIN2846739) western blot analysis in mouse NIH-3T3 cell line lysates (35 µg/lane). This demonstrates the X antibody detected the X protein (arrow).



### Western Blotting

**Image 2.** Western blot analysis of X (arrow) using rabbit polyclonal X Antibody (C-term) (ABIN657757 and ABIN2846739). 293 cell lysates (2 µg/lane) either nontransfected (Lane 1) or transiently transfected (Lane 2) with the X gene.



### Western Blotting

**Image 3.** X Antibody (C-term) (ABIN657757 and ABIN2846739) western blot analysis in WiDr cell line lysates (35 µg/lane). This demonstrates the X antibody detected the X protein (arrow).