

Datasheet for ABIN657769  
**anti-MGMT antibody (N-Term)**

## 2 Images

[Go to Product page](#)

## Overview

Quantity:	400 µL
Target:	MGMT
Binding Specificity:	AA 1-30, N-Term
Reactivity:	Human
Host:	Rabbit
Clonality:	Polyclonal
Application:	Western Blotting (WB), Immunofluorescence (IF)

## Product Details

Immunogen:	This MGMT antibody is generated from rabbits immunized with a KLH conjugated synthetic peptide between 1-30 amino acids from the N-terminal region of human MGMT.
Clone:	RB33782
Isotype:	Ig Fraction
Purification:	This antibody is purified through a protein A column, followed by peptide affinity purification.

## Target Details

Target:	MGMT
Alternative Name:	MGMT ( <a href="#">MGMT Products</a> )
Background:	MGMT is involved in the cellular defense against the biological effects of O6-methylguanine (O6-MeG) in DNA. Repairs alkylated guanine in DNA by stoichiometrically transferring the alkyl group at the O-6 position to a cysteine residue in the enzyme. This is a suicide reaction: the

## Target Details

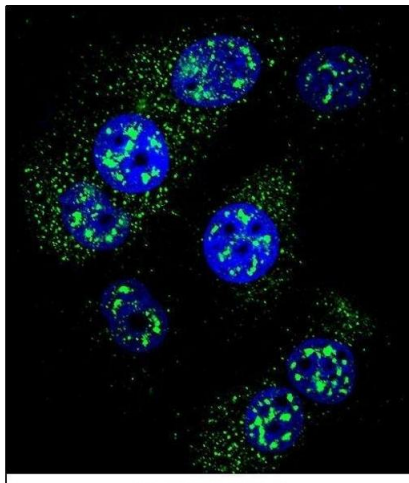
	enzyme is irreversibly inactivated.
Molecular Weight:	21646
Gene ID:	4255
UniProt:	<a href="#">P16455</a>
Pathways:	<a href="#">DNA Damage Repair</a> , <a href="#">Positive Regulation of Response to DNA Damage Stimulus</a>

## Application Details

Application Notes:	IF: 1:10~50. WB: 1:1000
Restrictions:	For Research Use only

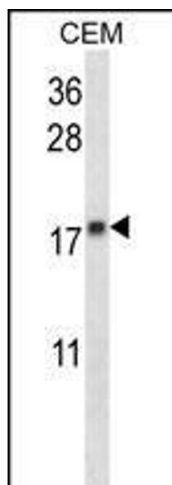
## Handling

Format:	Liquid
Buffer:	Purified polyclonal antibody supplied in PBS with 0.09 % (W/V) sodium azide.
Preservative:	Sodium azide
Precaution of Use:	This product contains Sodium azide: a POISONOUS AND HAZARDOUS SUBSTANCE which should be handled by trained staff only.
Storage:	4 °C,-20 °C
Storage Comment:	MGMT Antibody (N-term) can be refrigerated at 2-8 °C for up to 6 months. For long term storage, place the at -20 °C.
Expiry Date:	6 months



#### Immunofluorescence

**Image 1.** Confocal immunofluorescent analysis of MGMT Antibody (N-term) (ABIN657769 and ABIN2846745) with MCF-7 cell followed by Alexa Fluor 488-conjugated goat anti-rabbit IgG (green). DAPI was used to stain the cell nuclear (blue).



#### Western Blotting

**Image 2.** MGMT Antibody (N-term) (ABIN657769 and ABIN2846745) western blot analysis in CEM cell line lysates (35 µg/lane). This demonstrates the MGMT antibody detected the MGMT protein (arrow).