

Datasheet for ABIN657771
anti-RAB6B antibody (C-Term)[Go to Product page](#)

1 Image

Overview

Quantity:	400 µL
Target:	RAB6B
Binding Specificity:	AA 167-195, C-Term
Reactivity:	Human
Host:	Rabbit
Clonality:	Polyclonal
Application:	Western Blotting (WB)

Product Details

Immunogen:	This RAB6B antibody is generated from rabbits immunized with a KLH conjugated synthetic peptide between 167-195 amino acids from the C-terminal region of human RAB6B.
Clone:	RB33812
Isotype:	Ig Fraction
Predicted Reactivity:	B, M
Purification:	This antibody is purified through a protein A column, followed by peptide affinity purification.

Target Details

Target:	RAB6B
Alternative Name:	RAB6B (RAB6B Products)
Background:	RAB6B seems to have a role in retrograde membrane traffic at the level of the Golgi complex.

Target Details

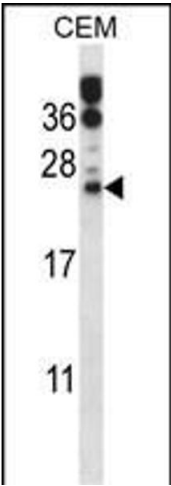
	May function in retrograde transport in neuronal cells.
Molecular Weight:	23462
Gene ID:	51560
NCBI Accession:	NP_057661
UniProt:	Q9NRW1

Application Details

Application Notes:	WB: 1:1000
Restrictions:	For Research Use only

Handling

Format:	Liquid
Buffer:	Purified polyclonal antibody supplied in PBS with 0.09 % (W/V) sodium azide.
Preservative:	Sodium azide
Precaution of Use:	This product contains Sodium azide: a POISONOUS AND HAZARDOUS SUBSTANCE which should be handled by trained staff only.
Storage:	4 °C,-20 °C
Storage Comment:	RAB6B Antibody (C-term) can be refrigerated at 2-8 °C for up to 6 months. For long term storage, place the at -20 °C.
Expiry Date:	6 months



Western Blotting

Image 1. RAB6B Antibody (C-term) (ABIN657771 and ABIN2846747) western blot analysis in CEM cell line lysates (35 µg/lane). This demonstrates the RAB6B antibody detected the RAB6B protein (arrow).