



[Go to Product page](#)

Datasheet for ABIN657773
anti-SMC1B antibody (AA 737-765)

2 Images

Overview

Quantity:	400 µL
Target:	SMC1B
Binding Specificity:	AA 737-765
Reactivity:	Human
Host:	Rabbit
Clonality:	Polyclonal
Application:	Western Blotting (WB), Immunohistochemistry (Paraffin-embedded Sections) (IHC (p))

Product Details

Immunogen:	This SMC1B antibody is generated from rabbits immunized with a KLH conjugated synthetic peptide between 737-765 amino acids from the Central region of human SMC1B.
Clone:	RB33824
Isotype:	Ig Fraction
Purification:	This antibody is purified through a protein A column, followed by peptide affinity purification.

Target Details

Target:	SMC1B
Alternative Name:	SMC1B (SMC1B Products)
Background:	SMC1L2 belongs to a family of proteins required for chromatid cohesion and DNA recombination during meiosis and mitosis (3:Revenkova et al., 2001 [PubMed 11564881]).

Target Details

Molecular Weight:	143908
Gene ID:	27127
NCBI Accession:	NP_683515
UniProt:	Q8NDV3

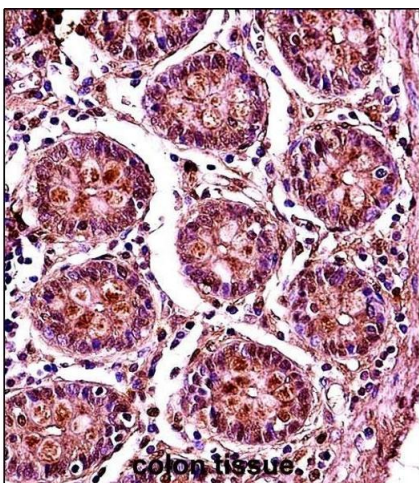
Application Details

Application Notes:	WB: 1:1000. IHC-P: 1:10~50
Restrictions:	For Research Use only

Handling

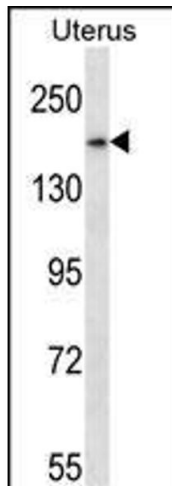
Format:	Liquid
Buffer:	Purified polyclonal antibody supplied in PBS with 0.09 % (W/V) sodium azide.
Preservative:	Sodium azide
Precaution of Use:	This product contains Sodium azide: a POISONOUS AND HAZARDOUS SUBSTANCE which should be handled by trained staff only.
Storage:	4 °C,-20 °C
Storage Comment:	SMC1B Antibody (Center) can be refrigerated at 2-8 °C for up to 6 months. For long term storage, place the at -20 °C.
Expiry Date:	6 months

Images



Immunohistochemistry (Paraffin-embedded Sections)

Image 1. SMC1B Antibody (Center) (ABIN657773 and ABIN2846748) immunohistochemistry analysis in formalin fixed and paraffin embedded human colon tissue followed by peroxidase conjugation of the secondary antibody and DAB staining. This data demonstrates the use of SMC1B Antibody (Center) for immunohistochemistry. Clinical relevance has not been evaluated.



Western Blotting

Image 2. SMC1B Antibody (Center) (ABIN657773 and ABIN2846748) western blot analysis in human normal Uterus tissue lysates (35 µg/lane). This demonstrates the SMC1B antibody detected the SMC1B protein (arrow).