

Datasheet for ABIN657779  
**anti-BMP2 antibody (AA 260-289)**[Go to Product page](#)

2 Images

2 Publications

## Overview

Quantity:	400 µL
Target:	BMP2
Binding Specificity:	AA 260-289
Reactivity:	Human
Host:	Rabbit
Clonality:	Polyclonal
Application:	Western Blotting (WB), Flow Cytometry (FACS)

## Product Details

Immunogen:	This BMP2 antibody is generated from rabbits immunized with a KLH conjugated synthetic peptide between 260-289 amino acids from the Central region of human BMP2.
Clone:	RB33889
Isotype:	Ig Fraction
Predicted Reactivity:	C, M, Rat
Purification:	This antibody is purified through a protein A column, followed by peptide affinity purification.

## Target Details

Target:	BMP2
Alternative Name:	BMP2 ( <a href="#">BMP2 Products</a> )
Background:	The protein encoded by this gene belongs to the transforming growth factor-beta (TGFB)

## Target Details

	superfamily. The encoded protein acts as a disulfide-linked homodimer and induces bone and cartilage formation.
Molecular Weight:	44702
Gene ID:	650
NCBI Accession:	<a href="#">NP_001191</a>
UniProt:	<a href="#">P12643</a>
Pathways:	<a href="#">Regulation of Hormone Metabolic Process</a> , <a href="#">Regulation of Hormone Biosynthetic Process</a> , <a href="#">Regulation of Muscle Cell Differentiation</a> , <a href="#">Growth Factor Binding</a> , <a href="#">Positive Regulation of fat Cell Differentiation</a>

## Application Details

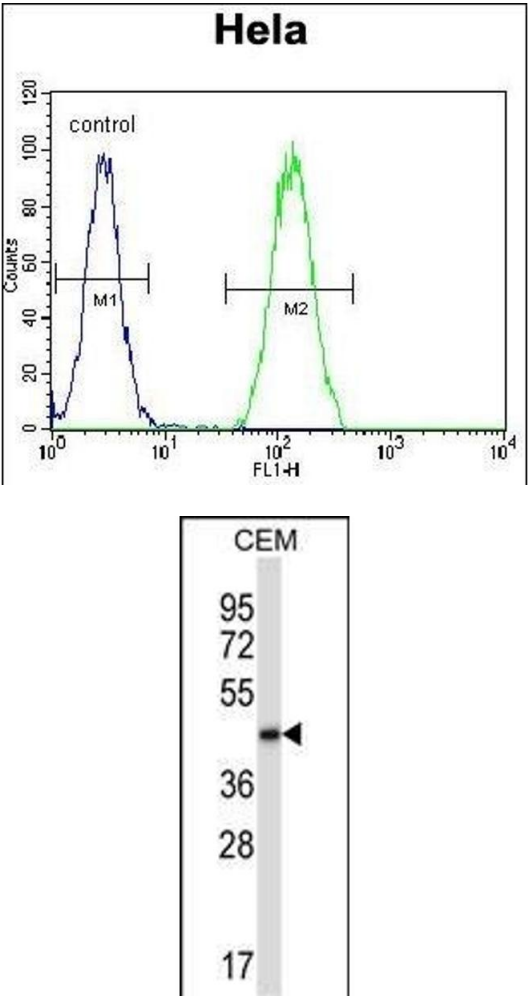
Application Notes:	WB: 1:1000. FC: 1:10~50
Restrictions:	For Research Use only

## Handling

Format:	Liquid
Buffer:	Purified polyclonal antibody supplied in PBS with 0.09 % (W/V) sodium azide.
Preservative:	Sodium azide
Precaution of Use:	This product contains Sodium azide: a POISONOUS AND HAZARDOUS SUBSTANCE which should be handled by trained staff only.
Storage:	4 °C,-20 °C
Storage Comment:	BMP2 Antibody (Center) can be refrigerated at 2-8 °C for up to 6 months. For long term storage, place the at -20 °C.
Expiry Date:	6 months

## Publications

Product cited in:	Chen, Yeh, Lung, Yang, Yuan: "Mineralization Effect of Hyaluronan on Dental Pulp Cells via CD44." in: <b>Journal of endodontics</b> , Vol. 42, Issue 5, pp. 711-6, (2017) ( <a href="#">PubMed</a> ).
-------------------	---



Flow Cytometry

**Image 1.** B Antibody (Center) (ABIN657779 and ABIN2846753) flow cytometric analysis of Hela cells (right histogram) compared to a negative control cell (left histogram).FITC-conjugated goat-anti-rabbit secondary antibodies were used for the analysis.

Western Blotting

**Image 2.** B Antibody (Center) (ABIN657779 and ABIN2846753) western blot analysis in CEM cell line lysates (35 µg/lane).This demonstrates the B antibody detected the B protein (arrow).