



[Go to Product page](#)

Datasheet for ABIN657781

anti-TRF2 antibody (AA 308-337)

2 Images

Overview

Quantity:	400 µL
Target:	TRF2 (TERF2)
Binding Specificity:	AA 308-337
Reactivity:	Human
Host:	Rabbit
Clonality:	Polyclonal
Conjugate:	This TRF2 antibody is un-conjugated
Application:	Western Blotting (WB), Immunohistochemistry (Paraffin-embedded Sections) (IHC (p))

Product Details

Immunogen:	This TERF2 antibody is generated from rabbits immunized with a KLH conjugated synthetic peptide between 308-337 amino acids from the Central region of human TERF2.
Clone:	RB33900
Isotype:	Ig Fraction
Purification:	This antibody is purified through a protein A column, followed by peptide affinity purification.

Target Details

Target:	TRF2 (TERF2)
Alternative Name:	TERF2 (TERF2 Products)
Background:	This gene encodes a telomere specific protein, TERF2, which is a component of the telomere

Target Details

nucleoprotein complex. This protein is present at telomeres in metaphase of the cell cycle, is a second negative regulator of telomere length and plays a key role in the protective activity of telomeres. While having similar telomere binding activity and domain organization, TERF2 differs from TERF1 in that its N terminus is basic rather than acidic.

Molecular Weight: 59594

Gene ID: 7014

NCBI Accession: [NP_005643](#)

UniProt: [Q15554](#)

Pathways: [Cell Division Cycle, Telomere Maintenance](#)

Application Details

Application Notes: WB: 1:1000. IHC-P: 1:10~50

Restrictions: For Research Use only

Handling

Format: Liquid

Buffer: Purified polyclonal antibody supplied in PBS with 0.09 % (W/V) sodium azide.

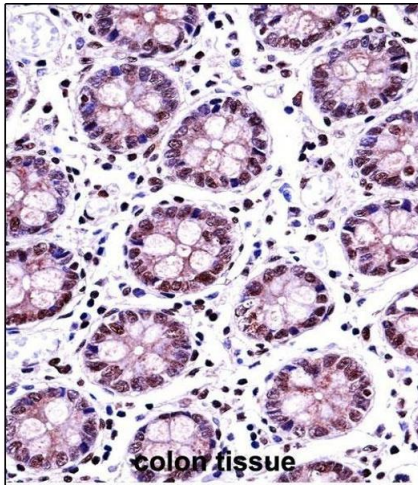
Preservative: Sodium azide

Precaution of Use: This product contains Sodium azide: a POISONOUS AND HAZARDOUS SUBSTANCE which should be handled by trained staff only.

Storage: 4 °C,-20 °C

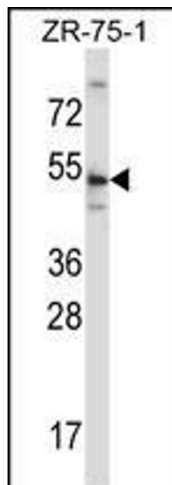
Storage Comment: TERF2 Antibody (Center) can be refrigerated at 2-8 °C for up to 6 months. For long term storage, place the at -20 °C.

Expiry Date: 6 months



Immunohistochemistry (Paraffin-embedded Sections)

Image 1. TERF2 Antibody (Center) ((ABIN657781 and ABIN2846755))immunohistochemistry analysis in formalin fixed and paraffin embedded human colon tissue followed by peroxidase conjugation of the secondary antibody and DAB staining.This data demonstrates the use of TERF2 Antibody (Center) for immunohistochemistry. Clinical relevance has not been evaluated.



Western Blotting

Image 2. TERF2 Antibody (Center) (ABIN657781 and ABIN2846755) western blot analysis in ZR-75-1 cell line lysates (35 µg/lane).This demonstrates the TERF2 antibody detected the TERF2 protein (arrow).