



[Go to Product page](#)

Datasheet for ABIN657784

anti-Endothelin 2 antibody (C-Term)

2 Images

Overview

Quantity:	400 µL
Target:	Endothelin 2 (EDN2)
Binding Specificity:	AA 107-136, C-Term
Reactivity:	Human
Host:	Rabbit
Clonality:	Polyclonal
Conjugate:	This Endothelin 2 antibody is un-conjugated
Application:	Western Blotting (WB)

Product Details

Immunogen:	This EDN2 antibody is generated from rabbits immunized with a KLH conjugated synthetic peptide between 107-136 amino acids from the C-terminal region of human EDN2.
Clone:	RB33908
Isotype:	Ig Fraction
Predicted Reactivity:	Pr
Purification:	This antibody is purified through a protein A column, followed by peptide affinity purification.

Target Details

Target:	Endothelin 2 (EDN2)
Alternative Name:	EDN2 (EDN2 Products)

Target Details

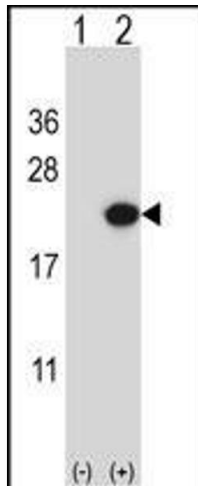
Background:	This gene encodes a member of the endothelin protein family of secretory vasoconstrictive peptides. The preproprotein is processed to a short mature form which functions as a ligand for the endothelin receptors that initiate intracellular signaling events. This gene product is involved in a wide range of biological processes, such as hypertension and ovulation. [provided by RefSeq].
Molecular Weight:	19960
Gene ID:	1907
NCBI Accession:	NP_001947
UniProt:	P20800
Pathways:	Hormone Activity , Negative Regulation of Hormone Secretion , Regulation of Systemic Arterial Blood Pressure by Hormones

Application Details

Application Notes:	WB: 1:1000. WB: 1:1000
Restrictions:	For Research Use only

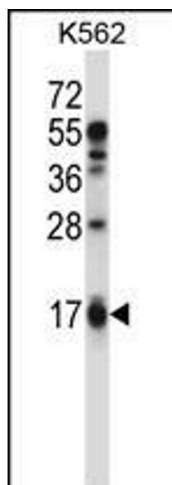
Handling

Format:	Liquid
Buffer:	Purified polyclonal antibody supplied in PBS with 0.09 % (W/V) sodium azide.
Preservative:	Sodium azide
Precaution of Use:	This product contains Sodium azide: a POISONOUS AND HAZARDOUS SUBSTANCE which should be handled by trained staff only.
Storage:	4 °C,-20 °C
Storage Comment:	EDN2 Antibody (C-term) can be refrigerated at 2-8 °C for up to 6 months. For long term storage, place the at -20 °C.
Expiry Date:	6 months



Western Blotting

Image 1. Western blot analysis of EDN2 (arrow) using rabbit polyclonal EDN2 Antibody (C-term) (ABIN657784 and ABIN2846758). 293 cell lysates (2 µg/lane) either nontransfected (Lane 1) or transiently transfected (Lane 2) with the EDN2 gene.



Western Blotting

Image 2. EDN2 Antibody (C-term) (ABIN657784 and ABIN2846758) western blot analysis in K562 cell line lysates (35 µg/lane). This demonstrates the EDN2 antibody detected the EDN2 protein (arrow).