



Datasheet for ABIN657788 **anti-NPFFR2 antibody (N-Term)**



[Go to Product page](#)

1 Image

Overview

Quantity:	400 µL
Target:	NPFFR2 (NPFF2)
Binding Specificity:	AA 3-32, N-Term
Reactivity:	Human
Host:	Rabbit
Clonality:	Polyclonal
Application:	Western Blotting (WB)

Product Details

Immunogen:	This NPFFR2 antibody is generated from rabbits immunized with a KLH conjugated synthetic peptide between 3-32 amino acids from the N-terminal region of human NPFFR2.
Clone:	RB33935
Isotype:	Ig Fraction
Purification:	This antibody is purified through a protein A column, followed by peptide affinity purification.

Target Details

Target:	NPFFR2 (NPFF2)
Alternative Name:	NPFFR2 (NPFF2 Products)
Background:	This gene encodes a member of a subfamily of G-protein-coupled neuropeptide receptors. This protein is activated by the neuropeptides A-18-amide (NPAF) and F-8-amide (NPFF) and may function in pain modulation and regulation of the opioid system. Alternative splicing results in

Target Details

multiple transcript variants.

Molecular Weight: 60270

Gene ID: 10886

NCBI Accession: [NP_001138228](#), [NP_004876](#), [NP_444264](#)

UniProt: [Q9Y5X5](#)

Pathways: [cAMP Metabolic Process](#)

Application Details

Application Notes: WB: 1:1000

Restrictions: For Research Use only

Handling

Format: Liquid

Buffer: Purified polyclonal antibody supplied in PBS with 0.09 % (W/V) sodium azide.

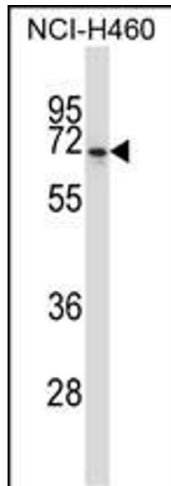
Preservative: Sodium azide

Precaution of Use: This product contains Sodium azide: a POISONOUS AND HAZARDOUS SUBSTANCE which should be handled by trained staff only.

Storage: 4 °C,-20 °C

Storage Comment: NPFFR2 Antibody (N-term) can be refrigerated at 2-8 °C for up to 6 months. For long term storage, place the at -20 °C.

Expiry Date: 6 months



Western Blotting

Image 1. NPFFR2 Antibody (N-term) (ABIN657788 and ABIN2846762) western blot analysis in NCI- cell line lysates (35 µg/lane). This demonstrates the NPFFR2 antibody detected the NPFFR2 protein (arrow).