

Datasheet for ABIN657791
anti-CAPN11 antibody (AA 409-438)

2 Images

[Go to Product page](#)

Overview

| | |
|----------------------|--|
| Quantity: | 400 µL |
| Target: | CAPN11 |
| Binding Specificity: | AA 409-438 |
| Reactivity: | Human |
| Host: | Rabbit |
| Clonality: | Polyclonal |
| Application: | Western Blotting (WB), Immunohistochemistry (Paraffin-embedded Sections) (IHC (p)) |

Product Details

| | |
|---------------|---|
| Immunogen: | This CAPN11 antibody is generated from rabbits immunized with a KLH conjugated synthetic peptide between 409-438 amino acids from the Central region of human CAPN11. |
| Clone: | RB33941 |
| Isotype: | Ig Fraction |
| Purification: | This antibody is purified through a protein A column, followed by peptide affinity purification. |

Target Details

| | |
|-------------------|--|
| Target: | CAPN11 |
| Alternative Name: | CAPN11 (CAPN11 Products) |
| Background: | Calpains constitute a family of intracellular calcium-dependent cysteine proteases. There are eight members in this superfamily. They consist of a variable 80 kDa subunit and an invariant 30 kDa subunit. This calpain protein appears to have protease activity and calcium-binding |

Target Details

ability. A similar mouse protein may play a functional role in spermatogenesis and in the regulation of calcium-dependent signal transduction events during meiosis.

Molecular Weight: 84423

Gene ID: 11131

NCBI Accession: [NP_008989](#)

UniProt: [Q9UMQ6](#)

Application Details

Application Notes: WB: 1:1000. IHC-P: 1:10~50

Restrictions: For Research Use only

Handling

Format: Liquid

Buffer: Purified polyclonal antibody supplied in PBS with 0.09 % (W/V) sodium azide.

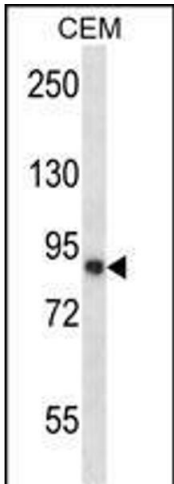
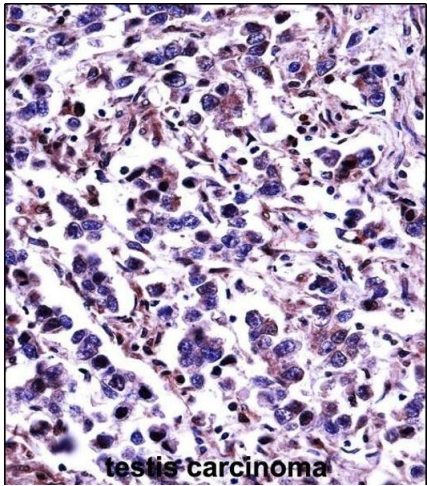
Preservative: Sodium azide

Precaution of Use: This product contains Sodium azide: a POISONOUS AND HAZARDOUS SUBSTANCE which should be handled by trained staff only.

Storage: 4 °C,-20 °C

Storage Comment: CAPN11 Antibody (Center) can be refrigerated at 2-8 °C for up to 6 months. For long term storage, place the at -20 °C.

Expiry Date: 6 months



| Immunohistochemistry (Paraffin-embedded Sections) | | | | |
|--|----|------|----------|----------|
| Image | 1. | CN11 | Antibody | (Center) |
| (13870c)immunohistochemistry analysis in formalin fixed and paraffin embedded human testis carcinoma followed by peroxidase conjugation of the secondary antibody and DAB staining.This data demonstrates the use of CN11 Antibody (Center) for immunohistochemistry. Clinical relevance has not been evaluated. | | | | |

| Western Blotting | |
|--|----|
| Image | 2. |
| CN11 Antibody (Center) 13870c western blot analysis in CEM cell line lysates (35 µg/lane).This demonstrates the CN11 antibody detected the CN11 protein (arrow). | |