

Datasheet for ABIN6577916  
**anti-POC1A antibody (C-Term)**[Go to Product page](#)

## 1 Image

## Overview

Quantity:	80 µL
Target:	POC1A
Binding Specificity:	AA 326-360, C-Term
Reactivity:	Human
Host:	Rabbit
Clonality:	Polyclonal
Conjugate:	This POC1A antibody is un-conjugated
Application:	Western Blotting (WB)

## Product Details

Immunogen:	This POC1A antibody is generated from a rabbit immunized with a KLH conjugated synthetic peptide between 326-360 amino acids from the C-terminal region of human POC1A.
Clone:	RB49679
Isotype:	Ig Fraction
Purification:	This antibody is purified through a protein A column, followed by peptide affinity purification.

## Target Details

Target:	POC1A
Alternative Name:	POC1A ( <a href="#">POC1A Products</a> )
Background:	Plays an important role in centriole assembly and/or stability and ciliogenesis. Involved in early

## Target Details

steps of centriole duplication, as well as in the later steps of centriole length control. Acts in concert with POC1B to ensure centriole integrity and proper mitotic spindle formation.

Molecular Weight: 45009

UniProt: [Q8NBT0](#)

## Application Details

Application Notes: WB: 1:1000-1:4000

Restrictions: For Research Use only

## Handling

Format: Liquid

Buffer: Purified polyclonal antibody supplied in PBS with 0.09 % (W/V) sodium azide.

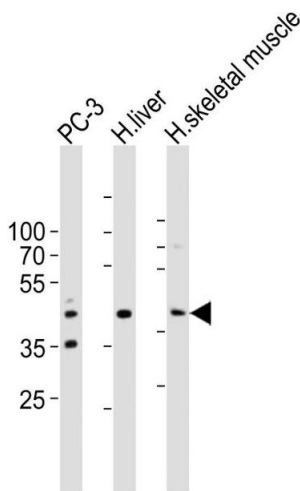
Preservative: Sodium azide

Precaution of Use: This product contains Sodium azide: a POISONOUS AND HAZARDOUS SUBSTANCE which should be handled by trained staff only.

Storage: 4 °C,-20 °C

Expiry Date: 6 months

## Images



### Western Blotting

**Image 1.** Western blot analysis of lysates from PC-3 cell line, human liver, human skeletal muscle tissue lysate(from left to right), using POC1A Antibody (C-term) ABIN6577916. A goat anti-rabbit IgG H&L(HRP) at 1:10000 dilution was used as the secondary antibody. Lysates at 20 µg per lane.