

Datasheet for ABIN657792
anti-KCNC2 antibody (C-Term)[Go to Product page](#)

1 Image

Overview

Quantity:	400 µL
Target:	KCNC2
Binding Specificity:	AA 544-573, C-Term
Reactivity:	Mouse
Host:	Rabbit
Clonality:	Polyclonal
Conjugate:	This KCNC2 antibody is un-conjugated
Application:	Western Blotting (WB)

Product Details

Immunogen:	This KCNC2 antibody is generated from rabbits immunized with a KLH conjugated synthetic peptide between 544-573 amino acids from the C-terminal region of human KCNC2.
Clone:	RB33946
Isotype:	Ig Fraction
Predicted Reactivity:	Rat
Purification:	This antibody is purified through a protein A column, followed by peptide affinity purification.

Target Details

Target:	KCNC2
Alternative Name:	KCNC2 (KCNC2 Products)

Target Details

Background: The Shaker gene family of *Drosophila* encodes components of voltage-gated potassium channels and is comprised of four subfamilies. Based on sequence similarity, this gene is similar to one of these subfamilies, namely the Shaw subfamily. The protein encoded by this gene belongs to the delayed rectifier class of channel proteins and is an integral membrane protein that mediates the voltage-dependent potassium ion permeability of excitable membranes. Three transcript variants encoding three different isoforms have been found for this gene.

Molecular Weight: 70226

Gene ID: 3747

NCBI Accession: [NP_001247426](#), [NP_001247427](#), [NP_001247428](#), [NP_631874](#), [NP_631875](#), [NP_715624](#)

UniProt: [Q96PR1](#)

Application Details

Application Notes: WB: 1:1000

Restrictions: For Research Use only

Handling

Format: Liquid

Buffer: Purified polyclonal antibody supplied in PBS with 0.09 % (W/V) sodium azide.

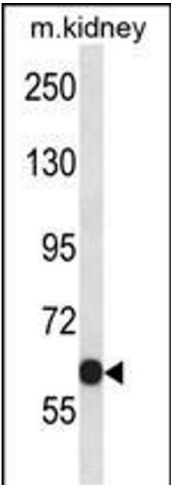
Preservative: Sodium azide

Precaution of Use: This product contains Sodium azide: a POISONOUS AND HAZARDOUS SUBSTANCE which should be handled by trained staff only.

Storage: 4 °C, -20 °C

Storage Comment: KCNC2 Antibody (C-term) can be refrigerated at 2-8 °C for up to 6 months. For long term storage, place the at -20 °C.

Expiry Date: 6 months



Western Blotting

Image 1. KCNC2 Antibody (C-term) (ABIN657792 and ABIN2846765) western blot analysis in mouse kidney tissue lysates (35 µg/lane). This demonstrates the KCNC2 antibody detected the KCNC2 protein (arrow).