

Datasheet for ABIN657797
anti-PTF1A antibody (C-Term)[Go to Product page](#)

1 Image

Overview

Quantity:	400 µL
Target:	PTF1A
Binding Specificity:	AA 287-316, C-Term
Reactivity:	Human
Host:	Rabbit
Clonality:	Polyclonal
Application:	Western Blotting (WB)

Product Details

Immunogen:	This PTF1A antibody is generated from rabbits immunized with a KLH conjugated synthetic peptide between 287-316 amino acids from the C-terminal region of human PTF1A.
Clone:	RB33964
Isotype:	Ig Fraction
Purification:	This antibody is purified through a protein A column, followed by peptide affinity purification.

Target Details

Target:	PTF1A
Alternative Name:	PTF1A (PTF1A Products)
Background:	This gene encodes a protein that is a component of the pancreas transcription factor 1 complex (PTF1) and is known to have a role in mammalian pancreatic development. The protein plays a role in determining whether cells allocated to the pancreatic buds continue

Target Details

towards pancreatic organogenesis or revert back to duodenal fates. The protein is thought to be involved in the maintenance of exocrine pancreas-specific gene expression including elastase 1 and amylase. Mutations in this gene cause cerebellar agenesis and loss of expression is seen in ductal type pancreas cancers.

Molecular Weight: 34970

Gene ID: 256297

NCBI Accession: [NP_835455](#)

UniProt: [Q7RTS3](#)

Pathways: [Retinoic Acid Receptor Signaling Pathway](#)

Application Details

Application Notes: WB: 1:1000

Restrictions: For Research Use only

Handling

Format: Liquid

Buffer: Purified polyclonal antibody supplied in PBS with 0.09 % (W/V) sodium azide.

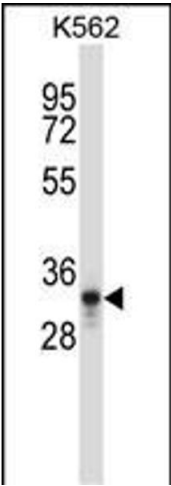
Preservative: Sodium azide

Precaution of Use: This product contains Sodium azide: a POISONOUS AND HAZARDOUS SUBSTANCE which should be handled by trained staff only.

Storage: 4 °C,-20 °C

Storage Comment: PTF1A Antibody (C-term) can be refrigerated at 2-8 °C for up to 6 months. For long term storage, place the at -20 °C.

Expiry Date: 6 months



Western Blotting

Image 1. PTF1A Antibody (C-term) (ABIN657797 and ABIN2846770) western blot analysis in K562 cell line lysates (35 µg/lane). This demonstrates the PTF1A antibody detected the PTF1A protein (arrow).