

Datasheet for ABIN657818

**anti-Topoisomerase I antibody (N-Term)****2** Images[Go to Product page](#)

## Overview

Quantity:	400 µL
Target:	Topoisomerase I (TOP1)
Binding Specificity:	AA 2-31, N-Term
Reactivity:	Human
Host:	Rabbit
Clonality:	Polyclonal
Application:	Western Blotting (WB), Immunofluorescence (IF)

## Product Details

Immunogen:	This TOP1 antibody is generated from rabbits immunized with a KLH conjugated synthetic peptide between 2-31 amino acids from the N-terminal region of human TOP1.
Clone:	RB34034
Isotype:	Ig Fraction
Predicted Reactivity:	Ha, M, Rat
Purification:	This antibody is purified through a protein A column, followed by peptide affinity purification.

## Target Details

Target:	Topoisomerase I (TOP1)
Alternative Name:	TOP1 ( <a href="#">TOP1 Products</a> )
Target Type:	Viral Protein

## Target Details

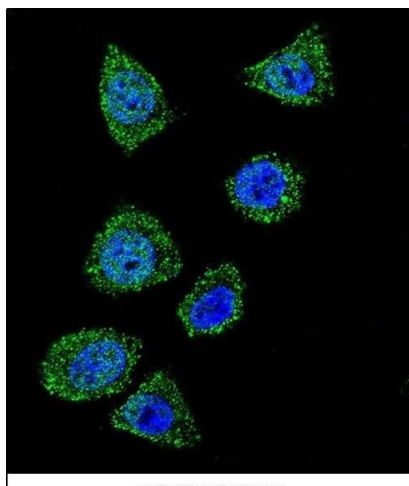
Background:	This gene encodes a DNA topoisomerase, an enzyme that controls and alters the topologic states of DNA during transcription. This enzyme catalyzes the transient breaking and rejoining of a single strand of DNA which allows the strands to pass through one another, thus altering the topology of DNA. This gene is localized to chromosome 20 and has pseudogenes which reside on chromosomes 1 and 22.
Molecular Weight:	90726
Gene ID:	7150
NCBI Accession:	<a href="#">NP_003277</a>
UniProt:	<a href="#">P11387</a>
Pathways:	<a href="#">Caspase Cascade in Apoptosis</a> , <a href="#">Stem Cell Maintenance</a>

## Application Details

Application Notes:	IF: 1:10~50. WB: 1:1000
Restrictions:	For Research Use only

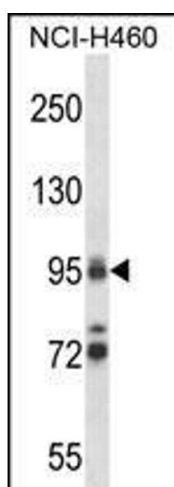
## Handling

Format:	Liquid
Buffer:	Purified polyclonal antibody supplied in PBS with 0.09 % (W/V) sodium azide.
Preservative:	Sodium azide
Precaution of Use:	This product contains Sodium azide: a POISONOUS AND HAZARDOUS SUBSTANCE which should be handled by trained staff only.
Storage:	4 °C, -20 °C
Storage Comment:	TOP1 Antibody (N-term) can be refrigerated at 2-8 °C for up to 6 months. For long term storage, place the at -20 °C.
Expiry Date:	6 months



#### Immunofluorescence

**Image 1.** Confocal immunofluorescent analysis of TOP1 Antibody (N-term) (ABIN657818 and ABIN2846785) with HeLa cells followed by Alexa Fluor 488-conjugated goat anti-rabbit IgG (green). DAPI was used to stain the cell nuclei (blue).



#### Western Blotting

**Image 2.** TOP1 Antibody (N-term) (ABIN657818 and ABIN2846785) western blot analysis in NCI-H460 cell line lysates (35 µg/lane). This demonstrates the TOP1 antibody detected the TOP1 protein (arrow).