

Datasheet for ABIN657820

anti-TACR1 antibody (AA 219-248)[Go to Product page](#)**1** Image

Overview

Quantity:	400 µL
Target:	TACR1
Binding Specificity:	AA 219-248
Reactivity:	Human
Host:	Rabbit
Clonality:	Polyclonal
Conjugate:	This TACR1 antibody is un-conjugated
Application:	Western Blotting (WB)

Product Details

Immunogen:	This TACR1 antibody is generated from rabbits immunized with a KLH conjugated synthetic peptide between 219-248 amino acids from the Central region of human TACR1.
Clone:	RB34040
Isotype:	Ig Fraction
Predicted Reactivity:	M, Rat
Purification:	This antibody is purified through a protein A column, followed by peptide affinity purification.

Target Details

Target:	TACR1
Alternative Name:	TACR1 (TACR1 Products)

Target Details

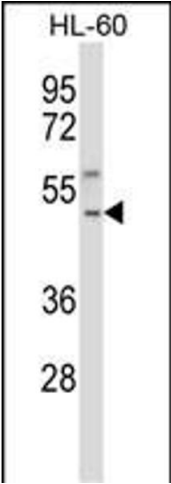
Background:	This gene belongs to a gene family of tachykinin receptors. These tachykinin receptors are characterized by interactions with G proteins and contain seven hydrophobic transmembrane regions. This gene encodes the receptor for the tachykinin substance P, also referred to as neurokinin 1. The encoded protein is also involved in the mediation of phosphatidylinositol metabolism of substance P. [provided by RefSeq].
Molecular Weight:	46251
Gene ID:	6869
NCBI Accession:	NP_001049 , NP_056542
UniProt:	P25103
Pathways:	Regulation of Systemic Arterial Blood Pressure by Hormones , Feeding Behaviour , Smooth Muscle Cell Migration

Application Details

Application Notes:	WB: 1:1000
Restrictions:	For Research Use only

Handling

Format:	Liquid
Buffer:	Purified polyclonal antibody supplied in PBS with 0.09 % (W/V) sodium azide.
Preservative:	Sodium azide
Precaution of Use:	This product contains Sodium azide: a POISONOUS AND HAZARDOUS SUBSTANCE which should be handled by trained staff only.
Storage:	4 °C,-20 °C
Storage Comment:	TACR1 Antibody (Center) can be refrigerated at 2-8 °C for up to 6 months. For long term storage, place the at -20 °C.
Expiry Date:	6 months



Western Blotting

Image 1. TACR1 Antibody (Center) (ABIN657820 and ABIN2846787) western blot analysis in HL-60 cell line lysates (35 µg/lane). This demonstrates the TACR1 antibody detected the TACR1 protein (arrow).