

Datasheet for ABIN657823  
**anti-KIR2DS1 antibody (AA 151-180)**[Go to Product page](#)

## 1 Image

## Overview

Quantity:	400 µL
Target:	KIR2DS1
Binding Specificity:	AA 151-180
Reactivity:	Human
Host:	Rabbit
Clonality:	Polyclonal
Application:	ELISA, Western Blotting (WB)

## Product Details

Immunogen:	This KIR2DS1 antibody is generated from rabbits immunized with a KLH conjugated synthetic peptide between 151-180 amino acids from the Central region of human KIR2DS1.
Clone:	RB34046
Isotype:	Ig Fraction
Purification:	This antibody is purified through a protein A column, followed by peptide affinity purification.

## Target Details

Target:	KIR2DS1
Alternative Name:	KIR2DS1 ( <a href="#">KIR2DS1 Products</a> )
Background:	Killer cell immunoglobulin-like receptors (KIRs) are transmembrane glycoproteins expressed by natural killer cells and subsets of T cells. The KIR genes are polymorphic and highly homologous and they are found in a cluster on chromosome 19q13.4 within the 1 Mb leukocyte



## Target Details

receptor complex (LRC). The gene content of the KIR gene cluster varies among haplotypes, although several 'framework' genes are found in all haplotypes (KIR3DL3, KIR3DP1, KIR3DL4, KIR3DL2). The KIR proteins are classified by the number of extracellular immunoglobulin domains (2D or 3D) and by whether they have a long (L) or short (S) cytoplasmic domain. KIR proteins with the long cytoplasmic domain transduce inhibitory signals upon ligand binding via an immune tyrosine-based inhibitory motif (ITIM), while KIR proteins with the short cytoplasmic domain lack the ITIM motif and instead associate with the TYRO protein tyrosine kinase binding protein to transduce activating signals. The ligands for several KIR proteins are subsets of HLA class I molecules, thus, KIR proteins are thought to play an important role in regulation of the immune response.

Molecular Weight:	33618
-------------------	-------

Gene ID:	3806
----------	------

NCBI Accession:	<a href="#">NP_055327</a>
-----------------	---------------------------

UniProt:	<a href="#">Q14954</a>
----------	------------------------

## Application Details

Application Notes:	WB: 1:1000
--------------------	------------

Restrictions:	For Research Use only
---------------	-----------------------

## Handling

Format:	Liquid
---------	--------

Buffer:	Purified polyclonal antibody supplied in PBS with 0.09 % (W/V) sodium azide.
---------	--

Preservative:	Sodium azide
---------------	--------------

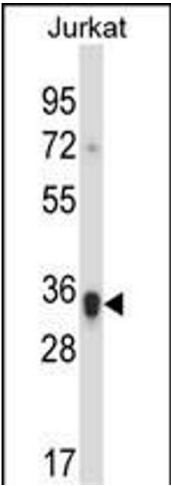
Precaution of Use:	This product contains Sodium azide: a POISONOUS AND HAZARDOUS SUBSTANCE which should be handled by trained staff only.
--------------------	--

Storage:	4 °C, -20 °C
----------	--------------

Storage Comment:	KIR2DS1 Antibody (Center) can be refrigerated at 2-8 °C for up to 6 months. For long term storage, place the at -20 °C.
------------------	---

Expiry Date:	6 months
--------------	----------





Western Blotting

**Image 1.** KIR2DS1 Antibody (Center) (ABIN657823 and ABIN2846790) western blot analysis in Jurkat cell line lysates (35 µg/lane). This demonstrates the KIR2DS1 antibody detected the KIR2DS1 protein (arrow).