



Datasheet for ABIN657825
anti-COPB1 antibody (AA 351-380)



[Go to Product page](#)

1 Image

Overview

| | |
|----------------------|--------------------------------------|
| Quantity: | 400 µL |
| Target: | COPB1 |
| Binding Specificity: | AA 351-380 |
| Reactivity: | Human |
| Host: | Rabbit |
| Clonality: | Polyclonal |
| Conjugate: | This COPB1 antibody is un-conjugated |
| Application: | Western Blotting (WB) |

Product Details

| | |
|-----------------------|---|
| Immunogen: | This COPB1 antibody is generated from rabbits immunized with a KLH conjugated synthetic peptide between 351-380 amino acids from the Central region of human COPB1. |
| Clone: | RB34051 |
| Isotype: | Ig Fraction |
| Predicted Reactivity: | B, M, Pig, Rat |
| Purification: | This antibody is purified through a protein A column, followed by peptide affinity purification. |

Target Details

| | |
|-------------------|--|
| Target: | COPB1 |
| Alternative Name: | COPB1 (COPB1 Products) |

Target Details

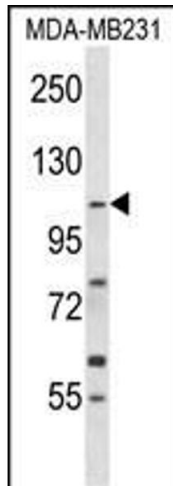
| | |
|-------------------|--|
| Background: | This gene encodes a protein subunit of the coatomer complex associated with non-clathrin coated vesicles. The coatomer complex, also known as the coat protein complex 1, forms in the cytoplasm and is recruited to the Golgi by activated guanosine triphosphatases. Once at the Golgi membrane, the coatomer complex may assist in the movement of protein and lipid components back to the endoplasmic reticulum. Alternatively spliced transcript variants have been described. |
| Molecular Weight: | 107142 |
| Gene ID: | 1315 |
| NCBI Accession: | NP_001137533 , NP_001137534 , NP_057535 |
| UniProt: | P53618 |

Application Details

| | |
|--------------------|-----------------------|
| Application Notes: | WB: 1:1000 |
| Restrictions: | For Research Use only |

Handling

| | |
|--------------------|--|
| Format: | Liquid |
| Buffer: | Purified polyclonal antibody supplied in PBS with 0.09 % (W/V) sodium azide. |
| Preservative: | Sodium azide |
| Precaution of Use: | This product contains Sodium azide: a POISONOUS AND HAZARDOUS SUBSTANCE which should be handled by trained staff only. |
| Storage: | 4 °C, -20 °C |
| Storage Comment: | COPB1 Antibody (Center) can be refrigerated at 2-8 °C for up to 6 months. For long term storage, place the at -20 °C. |
| Expiry Date: | 6 months |



Western Blotting

Image 1. COPB1 Antibody (Center) (ABIN657825 and ABIN2846792) western blot analysis in MDA-M cell line lysates (35 µg/lane). This demonstrates the COPB1 antibody detected the COPB1 protein (arrow).