

Datasheet for ABIN657826

anti-alpha Adaptin antibody (C-Term)**2** Images[Go to Product page](#)

Overview

Quantity:	400 µL
Target:	alpha Adaptin (AP2A1)
Binding Specificity:	AA 706-735, C-Term
Reactivity:	Human
Host:	Rabbit
Clonality:	Polyclonal
Application:	Western Blotting (WB), Immunohistochemistry (Paraffin-embedded Sections) (IHC (p))

Product Details

Immunogen:	This AP2A1 antibody is generated from rabbits immunized with a KLH conjugated synthetic peptide between 706-735 amino acids from the C-terminal region of human AP2A1.
Clone:	RB34053
Isotype:	Ig Fraction
Predicted Reactivity:	M
Purification:	This antibody is purified through a protein A column, followed by peptide affinity purification.

Target Details

Target:	alpha Adaptin (AP2A1)
Alternative Name:	AP2A1 (AP2A1 Products)
Background:	This gene encodes the alpha 1 adaptin subunit of the adaptor protein 2 (AP-2) complex found in

Target Details

clathrin coated vesicles. The AP-2 complex is a heterotetramer consisting of two large adaptins (alpha or beta), a medium adaptin (mu), and a small adaptin (sigma). The complex is part of the protein coat on the cytoplasmic face of coated vesicles which links clathrin to receptors in vesicles. Alternative splicing of this gene results in two transcript variants encoding two different isoforms. A third transcript variant has been described, but its full length nature has not been determined.

Molecular Weight: 107546

Gene ID: 160

NCBI Accession: [NP_055018](#), [NP_570603](#)

UniProt: [O95782](#)

Pathways: [Notch Signaling](#), [EGFR Signaling Pathway](#), [Neurotrophin Signaling Pathway](#), [EGFR Downregulation](#)

Application Details

Application Notes: WB: 1:1000. IHC-P: 1:10~50

Restrictions: For Research Use only

Handling

Format: Liquid

Buffer: Purified polyclonal antibody supplied in PBS with 0.09 % (W/V) sodium azide.

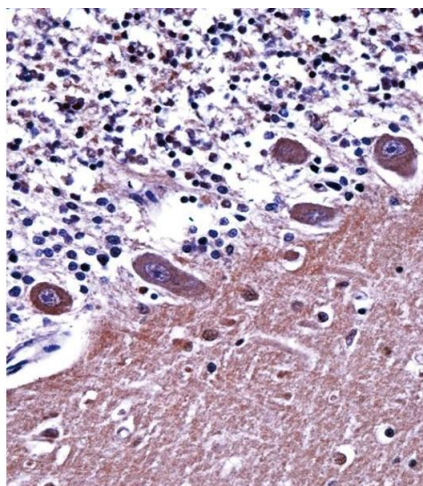
Preservative: Sodium azide

Precaution of Use: This product contains Sodium azide: a POISONOUS AND HAZARDOUS SUBSTANCE which should be handled by trained staff only.

Storage: 4 °C,-20 °C

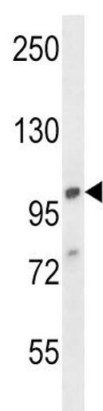
Storage Comment: AP3M2 Antibody (N-term) can be refrigerated at 2-8 °C for up to 6 months. For long term storage, place the at -20 °C.

Expiry Date: 6 months



Immunohistochemistry (Paraffin-embedded Sections)

Image 1. A1 Antibody (C-term) ((ABIN657826 and ABIN2846793))immunohistochemistry analysis in formalin fixed and paraffin embedded human cerebellum tissue followed by peroxidase conjugation of the secondary antibody and DAB staining. This data demonstrates the use of A1 Antibody (C-term) for immunohistochemistry. Clinical relevance has not been evaluated.



Western Blotting

Image 2. A1 Antibody (C-term) (ABIN657826 and ABIN2846793) western blot analysis in 293 cell line lysates (35 µg/lane). This demonstrates the A1 antibody detected the A1 protein (arrow).