

Datasheet for ABIN657836

anti-EPH Receptor A4 antibody (AA 464-492)**2** Images[Go to Product page](#)

Overview

Quantity:	400 µL
Target:	EPH Receptor A4 (EPHA4)
Binding Specificity:	AA 464-492
Reactivity:	Human, Mouse
Host:	Rabbit
Clonality:	Polyclonal
Application:	Western Blotting (WB), Immunohistochemistry (Paraffin-embedded Sections) (IHC (p))

Product Details

Immunogen:	This Mouse Epha4 antibody is generated from rabbits immunized with a KLH conjugated synthetic peptide between 464-492 amino acids from the Central region of mouse Epha4.
Clone:	RB34470
Isotype:	Ig Fraction
Purification:	This antibody is purified through a protein A column, followed by peptide affinity purification.

Target Details

Target:	EPH Receptor A4 (EPHA4)
Alternative Name:	Epha4 (EPHA4 Products)
Background:	Receptor for members of the ephrin-A family. Binds to ephrin-A1, -A4 and -A5. Binds more poorly to ephrin-A2 and -A3. May play a role in a signal transduction process involved in hindbrain pattern formation.

Target Details

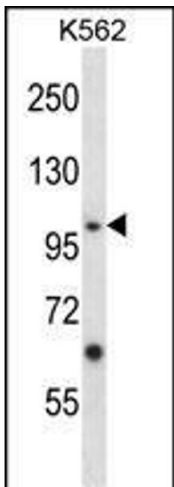
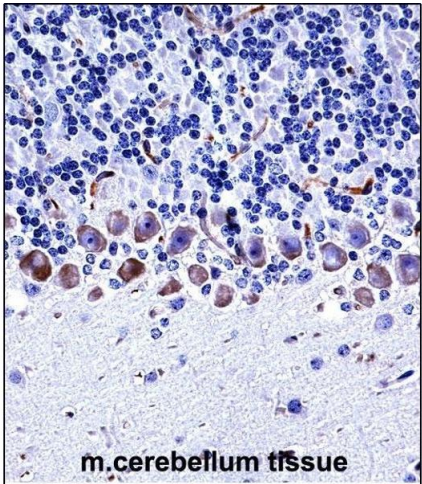
Molecular Weight:	109814
Gene ID:	13838
NCBI Accession:	NP_031962
UniProt:	Q03137
Pathways:	RTK Signaling

Application Details

Application Notes:	WB: 1:1000. IHC-P: 1:10~50
Restrictions:	For Research Use only

Handling

Format:	Liquid
Buffer:	Purified polyclonal antibody supplied in PBS with 0.09 % (W/V) sodium azide.
Preservative:	Sodium azide
Precaution of Use:	This product contains Sodium azide: a POISONOUS AND HAZARDOUS SUBSTANCE which should be handled by trained staff only.
Storage:	4 °C,-20 °C
Storage Comment:	Mouse EphA4 Antibody (Center) can be refrigerated at 2-8 °C for up to 6 months. For long term storage, place the at -20 °C.
Expiry Date:	6 months



Immunohistochemistry (Paraffin-embedded Sections)

Image 1. Mouse Epha4 Antibody (Center) ((ABIN657836 and ABIN2846799))immunohistochemistry analysis in formalin fixed and paraffin embedded mouse cerebellum tissue followed by peroxidase conjugation of the secondary antibody and DAB staining.This data demonstrates the use of Mouse Epha4 Antibody (Center) for immunohistochemistry. Clinical relevance has not been evaluated.

Western Blotting

Image 2. Mouse Epha4 Antibody (Center) (ABIN657836 and ABIN2846799) western blot analysis in K562 cell line lysates (35 µg/lane).This demonstrates the Epha4 antibody detected the Epha4 protein (arrow).