

Datasheet for ABIN657838

anti-MAP3K2 antibody (N-Term)**3** Images[Go to Product page](#)

Overview

Quantity:	400 µL
Target:	MAP3K2
Binding Specificity:	AA 14-43, N-Term
Reactivity:	Human, Mouse
Host:	Rabbit
Clonality:	Polyclonal
Conjugate:	This MAP3K2 antibody is un-conjugated
Application:	Western Blotting (WB), Immunohistochemistry (Paraffin-embedded Sections) (IHC (p))

Product Details

Immunogen:	This Mouse Map3k2 antibody is generated from rabbits immunized with a KLH conjugated synthetic peptide between 14-43 amino acids from the N-terminal region of mouse Map3k2.
Clone:	RB34479
Isotype:	Ig Fraction
Purification:	This antibody is purified through a protein A column, followed by peptide affinity purification.

Target Details

Target:	MAP3K2
Alternative Name:	Map3k2 (MAP3K2 Products)
Background:	Component of a protein kinase signal transduction cascade. Regulates the JNK and ERK5

Target Details

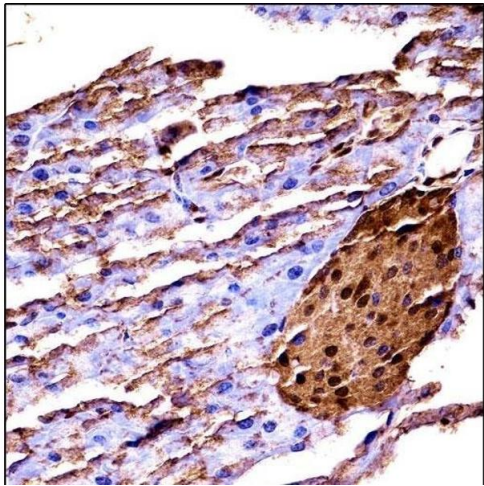
	pathways by phosphorylating and activating MAP2K5 and MAP2K7. Plays a role in caveolae kiss-and-run dynamics (By similarity).
Molecular Weight:	69574
Gene ID:	26405
UniProt:	Q61083
Pathways:	MAPK Signaling

Application Details

Application Notes:	WB: 1:1000. WB: 1:1000. IHC-P: 1:10~50
Restrictions:	For Research Use only

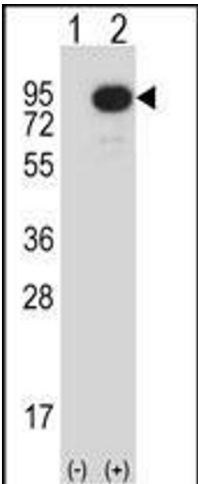
Handling

Format:	Liquid
Buffer:	Purified polyclonal antibody supplied in PBS with 0.09 % (W/V) sodium azide.
Preservative:	Sodium azide
Precaution of Use:	This product contains Sodium azide: a POISONOUS AND HAZARDOUS SUBSTANCE which should be handled by trained staff only.
Storage:	4 °C,-20 °C
Storage Comment:	Mouse Map3k2 Antibody (N-term) can be refrigerated at 2-8 °C for up to 6 months. For long term storage, place the at -20 °C.
Expiry Date:	6 months



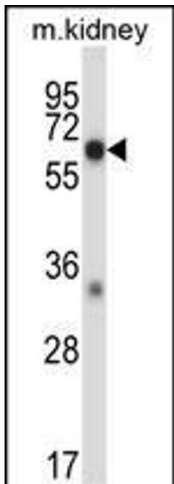
Immunohistochemistry (Paraffin-embedded Sections)

Image 1. Mouse Map3k2 (N-term) ((ABIN657838 and ABIN2846800))immunohistochemistry analysis in formalin fixed and paraffin embedded mouse pancreas tissue followed by peroxidase conjugation of the secondary antibody and DAB staining.This data demonstrates the use of Mouse Map3k2 (N-term) for immunohistochemistry. Clinical relevance has not been evaluated.



Western Blotting

Image 2. Western blot analysis of Map3k2 (arrow) using rabbit polyclonal Mouse Map3k2 Antibody (N-term) (ABIN657838 and ABIN2846800). 293 cell lysates (2 μg/lane) either nontransfected (Lane 1) or transiently transfected (Lane 2) with the Map3k2 gene.



Western Blotting

Image 3. Mouse Map3k2 Antibody (N-term) (ABIN657838 and ABIN2846800) western blot analysis in mouse kidney tissue lysates (35 μg/lane).This demonstrates the Map3k2 antibody detected the Map3k2 protein (arrow).