



[Go to Product page](#)

Datasheet for ABIN657849
anti-NIM1 antibody (C-Term)

2 Images

Overview

Quantity:	400 µL
Target:	NIM1
Binding Specificity:	AA 352-380, C-Term
Reactivity:	Human, Mouse
Host:	Rabbit
Clonality:	Polyclonal
Application:	Western Blotting (WB)

Product Details

Immunogen:	This Mouse Nim1 antibody is generated from rabbits immunized with a KLH conjugated synthetic peptide between 352-380 amino acids from the C-terminal region of mouse Nim1.
Clone:	RB34650
Isotype:	Ig Fraction
Purification:	This antibody is purified through a protein A column, followed by peptide affinity purification.

Target Details

Target:	NIM1
Alternative Name:	Nim1 (NIM1 Products)
Background:	Serine/threonine-protein kinase NIM1 belongs to the protein kinase superfamily, CAMK Ser/Thr protein kinase family. It contains one protein kinase domain.

Target Details

Molecular Weight:	49777
Gene ID:	100040601, 245269
NCBI Accession:	NP_780747
UniProt:	Q8BHI9

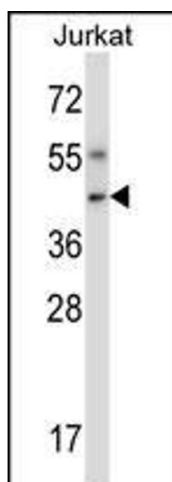
Application Details

Application Notes:	WB: 1:1000. WB: 1:1000
Restrictions:	For Research Use only

Handling

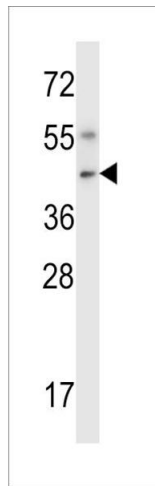
Format:	Liquid
Buffer:	Purified polyclonal antibody supplied in PBS with 0.09 % (W/V) sodium azide.
Preservative:	Sodium azide
Precaution of Use:	This product contains Sodium azide: a POISONOUS AND HAZARDOUS SUBSTANCE which should be handled by trained staff only.
Storage:	4 °C, -20 °C
Storage Comment:	Mouse Nim1 Antibody (C-term) can be refrigerated at 2-8 °C for up to 6 months. For long term storage, place the at -20 °C.
Expiry Date:	6 months

Images



Western Blotting

Image 1. Mouse Nim1 Antibody (C-term) (ABIN657849 and ABIN2846810) western blot analysis in Jurkat cell line lysates (35 µg/lane). This demonstrates the Nim1 antibody detected the Nim1 protein (arrow).



Western Blotting

Image 2. Mouse Nim1 Antibody (C-term) (ABIN657849 and ABIN2846810) western blot analysis in mouse liver tissue lysates (35 µg/lane). This demonstrates the Nim1 antibody detected the Nim1 protein (arrow).