

Datasheet for ABIN657865  
**anti-SLC22A1 antibody (C-Term)**

## 2 Images

[Go to Product page](#)

## Overview

Quantity:	400 µL
Target:	SLC22A1
Binding Specificity:	AA 511-539, C-Term
Reactivity:	Human
Host:	Rabbit
Clonality:	Polyclonal
Application:	Western Blotting (WB), Immunohistochemistry (Paraffin-embedded Sections) (IHC (p))

## Product Details

Immunogen:	This SLC22A1 antibody is generated from rabbits immunized with a KLH conjugated synthetic peptide between 511-539 amino acids from the C-terminal region of human SLC22A1.
Clone:	RB22501
Isotype:	Ig Fraction
Purification:	This antibody is purified through a protein A column, followed by peptide affinity purification.

## Target Details

Target:	SLC22A1
Alternative Name:	SLC22A1 ( <a href="#">SLC22A1 Products</a> )
Background:	Polyspecific organic cation transporters in the liver, kidney, intestine, and other organs are critical for elimination of many endogenous small organic cations as well as a wide array of drugs and environmental toxins. This gene is one of three similar cation transporter genes

## Target Details

located in a cluster on chromosome 6. The encoded protein contains twelve putative transmembrane domains and is a plasma integral membrane protein. Two transcript variants encoding two different isoforms have been found for this gene, but only the longer variant encodes a functional transporter. [provided by RefSeq].

Molecular Weight: 61154

Gene ID: 6580

NCBI Accession: [NP\\_003048](#), [NP\\_694857](#)

UniProt: [O15245](#)

Pathways: [Hormone Transport](#)

## Application Details

Application Notes: WB: 1:1000. IHC-P: 1:10~50

Restrictions: For Research Use only

## Handling

Format: Liquid

Buffer: Purified polyclonal antibody supplied in PBS with 0.09 % (W/V) sodium azide.

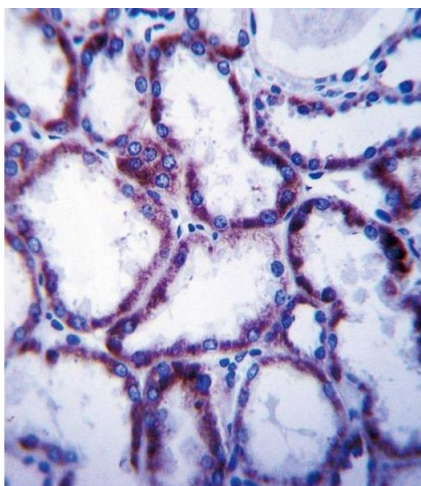
Preservative: Sodium azide

Precaution of Use: This product contains Sodium azide: a POISONOUS AND HAZARDOUS SUBSTANCE which should be handled by trained staff only.

Storage: 4 °C,-20 °C

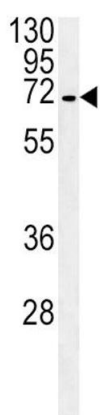
Storage Comment: SLC22A1 Antibody (C-term) can be refrigerated at 2-8 °C for up to 6 months. For long term storage, place the at -20 °C.

Expiry Date: 6 months



#### Immunohistochemistry (Paraffin-embedded Sections)

**Image 1.** SLC22A1 Antibody (C-term) (ABIN657865 and ABIN2846821) immunohistochemistry analysis in formalin fixed and paraffin embedded human kidney tissue followed by peroxidase conjugation of the secondary antibody and DAB staining. This data demonstrates the use of SLC22A1 Antibody (C-term) for immunohistochemistry. Clinical relevance has not been evaluated.



#### Western Blotting

**Image 2.** SLC22A1 Antibody (C-term) (ABIN657865 and ABIN2846821) western blot analysis in HepG2 cell line lysates (35 µg/lane). This demonstrates the SLC22A1 antibody detected the SLC22A1 protein (arrow).