

Datasheet for ABIN657866
anti-TRAF3 antibody (C-Term)[Go to Product page](#)

2 Images

Overview

Quantity:	400 µL
Target:	TRAF3
Binding Specificity:	AA 490-517, C-Term
Reactivity:	Human, Mouse
Host:	Rabbit
Clonality:	Polyclonal
Application:	Western Blotting (WB)

Product Details

Immunogen:	This TRAF3 antibody is generated from rabbits immunized with a KLH conjugated synthetic peptide between 490-517 amino acids from the C-terminal region of human TRAF3.
Clone:	RB22535
Isotype:	Ig Fraction
Purification:	This antibody is purified through a protein A column, followed by peptide affinity purification.

Target Details

Target:	TRAF3
Alternative Name:	TRAF3 (TRAF3 Products)
Background:	The protein encoded by this gene is a member of the TNF receptor associated factor (TRAF) protein family. TRAF proteins associate with, and mediate the signal transduction from, members of the TNF receptor (TNFR) superfamily. This protein participates in the signal

Target Details

transduction of CD40, a TNFR family member important for the activation of the immune response. This protein is found to be a critical component of the lymphotoxin-beta receptor (LTbetaR) signaling complex, which induces NF-kappaB activation and cell death initiated by LTbeta ligation. Epstein-Barr virus encoded latent infection membrane protein-1 (LMP1) can interact with this and several other members of the TRAF family, which may be essential for the oncogenic effects of LMP1. Three alternatively spliced transcript variants encoding two distinct isoforms have been reported.

Molecular Weight: 64490

Gene ID: 7187

NCBI Accession: [NP_001186356](#), [NP_003291](#), [NP_663777](#), [NP_663778](#)

UniProt: [Q13114](#)

Pathways: [NF-kappaB Signaling](#), [Apoptosis](#), [TLR Signaling](#), [Activation of Innate immune Response](#), [Hepatitis C](#), [Toll-Like Receptors Cascades](#)

Application Details

Application Notes: WB: 1:1000. WB: 1:1000

Restrictions: For Research Use only

Handling

Format: Liquid

Buffer: Purified polyclonal antibody supplied in PBS with 0.09 % (W/V) sodium azide.

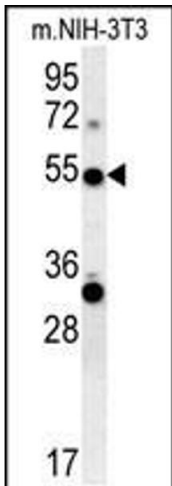
Preservative: Sodium azide

Precaution of Use: This product contains Sodium azide: a POISONOUS AND HAZARDOUS SUBSTANCE which should be handled by trained staff only.

Storage: 4 °C, -20 °C

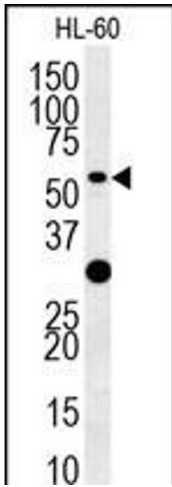
Storage Comment: TRAF3 Antibody (C-term) can be refrigerated at 2-8 °C for up to 6 months. For long term storage, place the at -20 °C.

Expiry Date: 6 months



Western Blotting

Image 1. TRAF3 Antibody (C-term) (ABIN657866 and ABIN2846822) western blot analysis in mouse NIH-3T3 cell line lysates (35 µg/lane). This demonstrates the TRAF3 antibody detected the TRAF3 protein (arrow).



Western Blotting

Image 2. TRAF3 Antibody (C-term) (ABIN657866 and ABIN2846822) western blot analysis in HL-60 cell line lysates (35 µg/lane). This demonstrates the TRAF3 antibody detected the TRAF3 protein (arrow).