

Datasheet for ABIN657867
anti-TRAF1 antibody (N-Term)[Go to Product page](#)

2 Images

Overview

Quantity:	400 µL
Target:	TRAF1
Binding Specificity:	AA 55-83, N-Term
Reactivity:	Human, Mouse
Host:	Rabbit
Clonality:	Polyclonal
Conjugate:	This TRAF1 antibody is un-conjugated
Application:	Western Blotting (WB)

Product Details

Immunogen:	This TRAF1 antibody is generated from rabbits immunized with a KLH conjugated synthetic peptide between 55-83 amino acids from the N-terminal region of human TRAF1.
Clone:	RB22557
Isotype:	Ig Fraction
Purification:	This antibody is purified through a protein A column, followed by peptide affinity purification.

Target Details

Target:	TRAF1
Alternative Name:	TRAF1 (TRAF1 Products)
Background:	The protein encoded by this gene is a member of the TNF receptor (TNFR) associated factor

Target Details

(TRAF) protein family. TRAF proteins associate with, and mediate the signal transduction from various receptors of the TNFR superfamily. This protein and TRAF2 form a heterodimeric complex, which is required for TNF-alpha-mediated activation of MAPK8/JNK and NF-kappaB. The protein complex formed by this protein and TRAF2 also interacts with inhibitor-of-apoptosis proteins (IAPs), and thus mediates the anti-apoptotic signals from TNF receptors. The expression of this protein can be induced by Epstein-Barr virus (EBV). EBV infection membrane protein 1 (LMP1) is found to interact with this and other TRAF proteins, this interaction is thought to link LMP1-mediated B lymphocyte transformation to the signal transduction from TNFR family receptors. Three transcript variants encoding two different isoforms have been found for this gene.

Molecular Weight: 46164

Gene ID: 7185

NCBI Accession: [NP_001177874](#), [NP_001177876](#), [NP_005649](#)

UniProt: [Q13077](#)

Pathways: [NF-kappaB Signaling](#), [Apoptosis](#), [Cell-Cell Junction Organization](#), [Asymmetric Protein Localization](#)

Application Details

Application Notes: WB: 1:1000. WB: 1:1000

Restrictions: For Research Use only

Handling

Format: Liquid

Buffer: Purified polyclonal antibody supplied in PBS with 0.09 % (W/V) sodium azide.

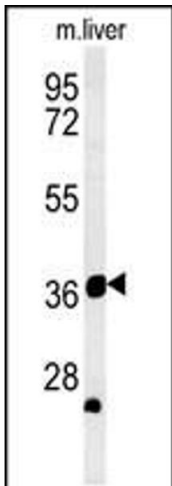
Preservative: Sodium azide

Precaution of Use: This product contains Sodium azide: a POISONOUS AND HAZARDOUS SUBSTANCE which should be handled by trained staff only.

Storage: 4 °C, -20 °C

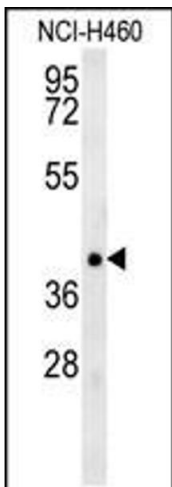
Storage Comment: TRAF1 Antibody (N-term) can be refrigerated at 2-8 °C for up to 6 months. For long term storage, place the at -20 °C.

Expiry Date: 6 months



Western Blotting

Image 1. TRAF1 Antibody (N-term) (ABIN657867 and ABIN2846823) western blot analysis in mouse liver tissue lysates (35 µg/lane). This demonstrates the TRAF1 antibody detected the TRAF1 protein (arrow).



Western Blotting

Image 2. TRAF1 Antibody (N-term) (ABIN657867 and ABIN2846823) western blot analysis in NCI- cell line lysates (35 µg/lane). This demonstrates the TRAF1 antibody detected the TRAF1 protein (arrow).