

Datasheet for ABIN657875
anti-SC4MOL antibody (C-Term)[Go to Product page](#)

2 Images

Overview

Quantity:	400 µL
Target:	SC4MOL (MSM01)
Binding Specificity:	AA 264-293, C-Term
Reactivity:	Human
Host:	Rabbit
Clonality:	Polyclonal
Application:	Western Blotting (WB), Immunohistochemistry (Paraffin-embedded Sections) (IHC (p))

Product Details

Immunogen:	This ERG25 antibody is generated from rabbits immunized with a KLH conjugated synthetic peptide between 264-293 amino acids from the C-terminal region of human ERG25.
Clone:	RB26243
Isotype:	Ig Fraction
Purification:	This antibody is purified through a protein A column, followed by peptide affinity purification.

Target Details

Target:	SC4MOL (MSM01)
Alternative Name:	ERG25 (MSM01 Products)
Background:	Sterol-C4-mehtyl oxidase-like protein was isolated based on its similarity to the yeast ERG25 protein. It contains a set of putative metal binding motifs with similarity to that seen in a family of membrane desaturases-hydroxylases. The protein is localized to the endoplasmic reticulum

Target Details

membrane and is believed to function in cholesterol biosynthesis. Alternatively spliced transcript variants encoding distinct isoforms have been found for this gene.

Molecular Weight: 35216

Gene ID: 6307

NCBI Accession: [NP_001017369](#), [NP_006736](#)

UniProt: [Q15800](#)

Application Details

Application Notes: WB: 1:1000. IHC-P: 1:10~50

Restrictions: For Research Use only

Handling

Format: Liquid

Buffer: Purified polyclonal antibody supplied in PBS with 0.09 % (W/V) sodium azide.

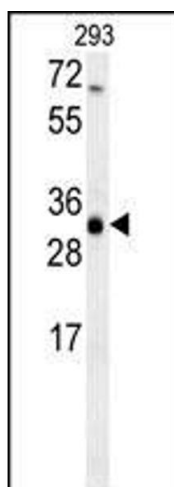
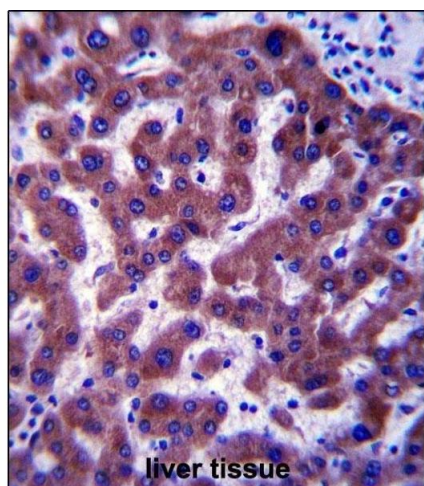
Preservative: Sodium azide

Precaution of Use: This product contains Sodium azide: a POISONOUS AND HAZARDOUS SUBSTANCE which should be handled by trained staff only.

Storage: 4 °C,-20 °C

Storage Comment: ERG25 Antibody (C-term) can be refrigerated at 2-8 °C for up to 6 months. For long term storage, place the at -20 °C.

Expiry Date: 6 months



Immunohistochemistry (Paraffin-embedded Sections)

Image 1. ERG25 Antibody (C-term) (ABIN657875 and ABIN2846831) immunohistochemistry analysis in formalin fixed and paraffin embedded human liver tissue followed by peroxidase conjugation of the secondary antibody and DAB staining. This data demonstrates the use of ERG25 Antibody (C-term) for immunohistochemistry. Clinical relevance has not been evaluated.

Western Blotting

Image 2. ERG25 Antibody (C-term) (ABIN657875 and ABIN2846831) western blot analysis in 293 cell line lysates (35 µg/lane). This demonstrates the ERG25 antibody detected the ERG25 protein (arrow).