



[Go to Product page](#)

Datasheet for ABIN657876  
**anti-LYPL1 antibody (AA 88-117)**

3 Images

### Overview

Quantity:	400 µL
Target:	LYPL1
Binding Specificity:	AA 88-117
Reactivity:	Human, Mouse
Host:	Rabbit
Clonality:	Polyclonal
Conjugate:	This LYPL1 antibody is un-conjugated
Application:	Western Blotting (WB), Flow Cytometry (FACS), Immunohistochemistry (Paraffin-embedded Sections) (IHC (p))

### Product Details

Immunogen:	This LYPL1 antibody is generated from rabbits immunized with a KLH conjugated synthetic peptide between 88-117 amino acids from the Central region of human LYPL1.
Clone:	RB26246
Isotype:	Ig Fraction
Purification:	This antibody is purified through a protein A column, followed by peptide affinity purification.

### Target Details

Target:	LYPL1
Alternative Name:	LYPL1 ( <a href="#">LYPL1 Products</a> )

## Target Details

---

Background: The exact function of this protein remains unknown.

Molecular Weight: 26316

Gene ID: 127018

NCBI Accession: [NP\\_620149](#)

UniProt: [Q5VWZ2](#)

## Application Details

---

Application Notes: WB: 1:1000. IHC-P: 1:10~50. FC: 1:10~50

Restrictions: For Research Use only

## Handling

---

Format: Liquid

Buffer: Purified polyclonal antibody supplied in PBS with 0.09 % (W/V) sodium azide.

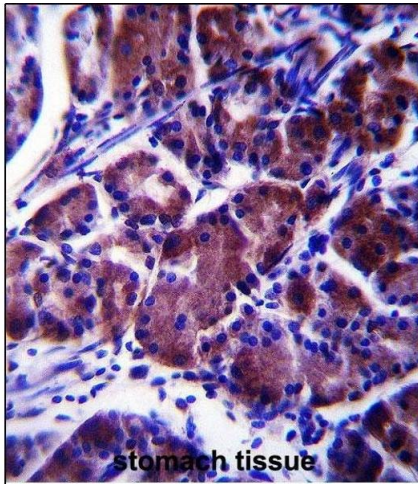
Preservative: Sodium azide

Precaution of Use: This product contains Sodium azide: a POISONOUS AND HAZARDOUS SUBSTANCE which should be handled by trained staff only.

Storage: 4 °C,-20 °C

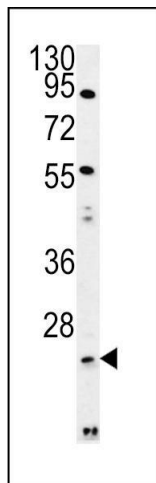
Storage Comment: LYPL1 Antibody (Center) can be refrigerated at 2-8 °C for up to 6 months. For long term storage, place the at -20 °C.

Expiry Date: 6 months



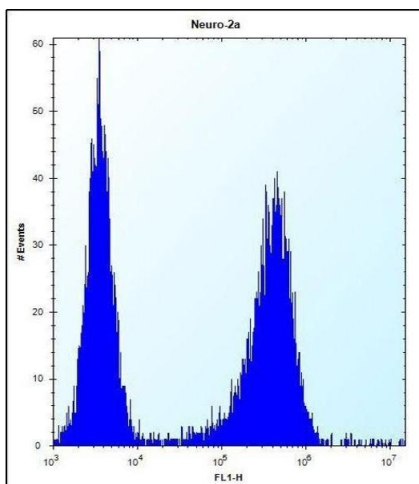
### Immunohistochemistry (Paraffin-embedded Sections)

**Image 1.** LYPL1 Antibody (Center) (ABIN657876 and ABIN2846832) immunohistochemistry analysis in formalin fixed and paraffin embedded human stomach tissue followed by peroxidase conjugation of the secondary antibody and DAB staining. This data demonstrates the use of LYPL1 Antibody (Center) for immunohistochemistry. Clinical relevance has not been evaluated.



### Western Blotting

**Image 2.** LYPL1 Antibody (Center) (ABIN657876 and ABIN2846832) western blot analysis in mouse Neuro-2a cell line lysates (35 µg/lane). This demonstrates the LYPL1 antibody detected the LYPL1 protein (arrow).



### Flow Cytometry

**Image 3.** LYPL1 Antibody (Center) (ABIN657876 and ABIN2846832) flow cytometric analysis of Neuro-2a cells (right histogram) compared to a negative control cell (left histogram). FITC-conjugated donkey-anti-rabbit secondary antibodies were used for the analysis.