

Datasheet for ABIN657878  
**anti-WBS16 antibody (N-Term)**[Go to Product page](#)

## 1 Image

## Overview

Quantity:	400 µL
Target:	WBS16
Binding Specificity:	AA 15-44, N-Term
Reactivity:	Human, Hamster
Host:	Rabbit
Clonality:	Polyclonal
Application:	Western Blotting (WB)

## Product Details

Immunogen:	This WBS16 antibody is generated from rabbits immunized with a KLH conjugated synthetic peptide between 15-44 amino acids from the N-terminal region of human WBS16.
Clone:	RB27004
Isotype:	Ig Fraction
Purification:	This antibody is purified through a protein A column, followed by peptide affinity purification.

## Target Details

Target:	WBS16
Alternative Name:	WBS16 ( <a href="#">WBS16 Products</a> )
Background:	This gene encodes an RCC1-like G-exchanging factor. It is deleted in Williams syndrome, a multisystem developmental disorder caused by the deletion of contiguous genes at 7q11.23. [provided by RefSeq].

## Target Details

Molecular Weight:	49997
Gene ID:	81554
NCBI Accession:	<a href="#">NP_110425</a>
UniProt:	<a href="#">Q96I51</a>

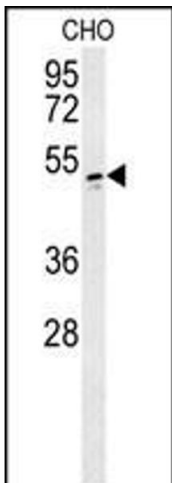
## Application Details

Application Notes:	WB: 1:1000
Restrictions:	For Research Use only

## Handling

Format:	Liquid
Buffer:	Purified polyclonal antibody supplied in PBS with 0.09 % (W/V) sodium azide.
Preservative:	Sodium azide
Precaution of Use:	This product contains Sodium azide: a POISONOUS AND HAZARDOUS SUBSTANCE which should be handled by trained staff only.
Storage:	4 °C, -20 °C
Storage Comment:	WBS16 Antibody (N-term) can be refrigerated at 2-8 °C for up to 6 months. For long term storage, place the at -20 °C.
Expiry Date:	6 months

## Images



### Western Blotting

**Image 1.** WBS16 Antibody (N-term) (ABIN657878 and ABIN2846834) western blot analysis in CHO cell line lysates (35 µg/lane). This demonstrates the WBS16 antibody detected the WBS16 protein (arrow).